

Cambridgeshire PCT
Public Health and Health Inequalities Data Set 2007

Contents

	Page
Map of Cambridgeshire wards	1
Introduction	2
Summaries	
• Cambridgeshire	3
• Cambridge City	6
• East Cambridgeshire	9
• Fenland	11
• Huntingdonshire	14
• South Cambridgeshire	16
Demography	18
Social and environmental context	25
Current known health status of the population of Cambridgeshire	34
Current met needs of the population of Cambridgeshire	50
Health Inequalities across Cambridgeshire	53
Glossary	56

Cambridgeshire - 2003/04 Electoral Ward boundaries



Map produced by Anglia Support Partnership on behalf of Cambridgeshire and Peterborough PCTs. Reproduced from Ordnance Survey digital map data © Crown Copyright 2007. All rights reserved. Unauthorised reproduction infringes Crown Copyright and may lead to prosecution or civil proceedings. 100045320.

Introduction

This report is part of an ongoing commitment to make routine public health data available to people in the NHS, local authorities, voluntary services and other organisations in Cambridgeshire and Peterborough. Public health datasets have been produced locally since 1997. It is hoped that these data will enable service providers to better understand the health needs of the population that they serve, support health improvement and help to reduce health inequalities across our area.

The current context for needs assessment in health and local government is defined by the Joint Strategic Needs Assessment (JSNA) approach. The concept of JSNAs was introduced in the Government's consultation paper, the *Commissioning framework for health and well-being*, which was published in March 2007. JSNAs "will describe the future health, care and well-being needs of local populations and the strategic direction of service delivery to help meet those needs". More information can be found at (http://www.dh.gov.uk/en/Publicationsandstatistics/Publications/PublicationsPolicyAndGuidance/DH_072604). This dataset has been put together with this guidance very much in mind and it is hoped that the publication will support local JSNAs. The dataset also acts as a supplement to the upcoming *Annual Public Health Report for Cambridgeshire*.

Data are provided in graphical and tabular form for topics such as demography, social and environmental factors, health status indicators, key disease areas and summary indicators of health inequalities. The main sources of data for this report are the Compendium of Clinical and Health Indicators, produced by the NHS Health and Social Care Information Centre, the 2001 Census and data provided by our colleagues in local government. Data from the Compendium of Clinical and Health Indicators are due to be updated in early 2008 and will be available at www.nchod.nhs.uk.

Following the 2006 NHS restructuring, known as *Commissioning a patient-led NHS*, the new Cambridgeshire Primary Care Trust (CPCT) now has the same boundary as Cambridgeshire County Council and the District Councils within Cambridgeshire. Data are therefore presented, where possible, for all these organisations along with comparative national data. It is hoped that this report is a useful resource and point of reference to support local health needs assessments, to contribute to joint planning and to inform priority monitoring and setting.

We would like to acknowledge the significant work of the Cambridgeshire PCT and Peterborough PCT public health intelligence team in producing this dataset - particularly Gen Fitzjohn for extracting and formatting the data, Helen Whyman for project managing the production and Thury Agustsdottir for writing the commentary. We would also like to thank our partners in local government for their input, particularly those from Cambridgeshire County Council's Research Group.

Dr Liz Robin Director of Public Health, Cambridgeshire PCT.

David Lea Assistant Director, Public Health Intelligence, Cambridgeshire PCT and Cambridgeshire and Peterborough Public Health Network.

Summary : Cambridgeshire

- It is estimated that there are 578,600 people living in Cambridgeshire, a quarter are aged under 20 years and just under a seventh aged 65 years and over.
- There are approximately 594,000 people registered with a GP practice in Cambridgeshire, with more females than males in the older age bands.
- Population forecasts suggest that the population of Cambridgeshire is set to increase by 16% by 2021, with the majority of the increase seen in Cambridge City and South Cambridgeshire. The child population is expected to increase by 4% with large increases seen in Cambridge City and South Cambridgeshire and decreases in the other districts, most noticeably in Huntingdonshire. The older population aged 65 and over, is expected to increase by 60%, with the largest proportion increases in South Cambridgeshire and Huntingdonshire.
- There are on average 6,500 births a year in Cambridgeshire, with 60% being born to mothers aged 25 to 34 years. Births are predicted to increase by 4% by 2021, with the latest increase seen in Cambridge City.
- All Cambridgeshire districts, with the exception of Fenland, have higher life expectancy at birth than seen nationally. This is most noticeable in South Cambridgeshire.
- Cambridgeshire has a predominantly white population. However, Cambridge City has a higher proportion of people from non-white ethnic groups when compared to the national average, with the most noticeable proportional difference in Chinese and Other ethnic groups. There are also considerable numbers of travellers, migrant workers and students within Cambridgeshire.
- Deprivation varies greatly across the county, with Fenland, north-east Cambridge and areas within Huntingdonshire having the highest levels of relative deprivation. The same pattern exists for children living in poverty. However, for older people living on benefits areas within Huntingdonshire, Cambridge City and Fenland show the greater levels.
- Housing tenure varies across the county, with very low levels of ownership in Cambridge City. The district also has the highest levels of private and social renting and people living in communal establishments. Cambridge City also has a noticeably different pattern of people's living arrangements compared to the rest of the county, with a low proportion of married couples and a high proportion of single (never married) people. All these factors are likely to be influenced by the high number of resident students in Cambridge City.
- Living arrangements for children and older people vary across the county with Cambridge City having an evidently high proportion of dependent children living in lone parent families and older people who live alone, especially people aged 85 years and over.
- In general, levels of overcrowding are low in Cambridgeshire, with the exception of Cambridge City, which has a higher rate than the national average. Cambridge City also has the highest proportions of dependent children and pensioners living in overcrowded households.
- Nearly a fifth of Cambridgeshire's population do not have access to a car or van. This goes down to less than tenth for children living in households with no access to a car or van but up to 4 in 10 pensioners. Cambridge City has the lowest levels of car ownership, which may be expected given that it is an urban area. However, Fenland has the second highest levels of non-car ownership in Cambridgeshire, which can have great implications in terms of access to services due to the district being a predominantly rural area.
- Generally Cambridgeshire has low levels of unemployment at 1.4%, with higher rates in Fenland (2.3%). Overall, a half of lone parents do not work, with higher proportions in South Cambridgeshire and Huntingdonshire.

Cambridgeshire continued

- Educational attainment varies greatly across the county, with low levels of key Stage 2 Level 4+ in Fenland and Cambridge City and noticeably low GCSE attainment in Fenland. South Cambridgeshire has markedly high attainment in both of these qualification areas.
- Nearly 6,600 children are eligible for Free School Meals in Cambridgeshire. Cambridge City and Fenland have noticeably higher eligibility rates than the county average.
- Cambridgeshire has low levels of teenage conceptions compared to the national data. However, Fenland has a significantly high rate of conceptions (compared to the Cambridgeshire average) in females aged under 18 years. At present the county are not on line to meet the target to reduce teenage conception rates by 45% by 2010.
- Cambridgeshire as a whole has significantly low fertility rates but East Cambridgeshire's rate is significantly high. The county low birth weight rate does not differ significantly to that seen nationally. In 2005 there were 465 babies born weighing less than 2,500 grams. On average there are 24 stillbirths and 27 infant deaths a year in Cambridgeshire. The rate for stillbirths is statistically significantly low compared to the England & Wales rate.
- Cambridge City and Fenland have a significantly greater number of people who considered themselves to have a limiting long term illness at the time of the 2001 Census than would be expected given the size and structure of their population. This is also true for children and older people with a limiting long term illness in Fenland.
- There are on average 4,900 deaths a year in Cambridgeshire. The county generally has very low rates of overall mortality. The death rates for all cause mortality, circulatory disease, coronary heart disease, stroke and cancer are significantly lower than the national averages. However the rate for circulatory disease in all ages in Fenland is significantly higher. Circulatory disease and cancer are the main causes of death in the overall population, conditions originating in the perinatal period and transport accidents in children and circulatory disease and cancer in older people.
- Overall the accident mortality rate in Cambridgeshire is slightly higher than the national average but does not differ significantly. However, Fenland has a significantly higher accident mortality rate in all people and children and young people aged 15 to 14 years compared to England & Wales. Accidental death rates in older people are fairly high in Huntingdonshire and East Cambridgeshire. Fenland, Huntingdonshire and East Cambridgeshire have significantly higher numbers of deaths from land based transport accidents than would be expected given the size and structure of their populations.
- There are on average 43 deaths from suicides and undetermined injury in Cambridgeshire a year. For the time period 2003 to 2005 Cambridge City and South Cambridgeshire had the highest such death rate but they do not differ significantly to the national average. It is estimated the 64,000 people will have had a mental health problem in the last week in Cambridgeshire. Likewise, it is estimated that there are nearly 3,300 children with emotional disorders, over 4,000 children with conduct disorders, nearly 1,100 children with hyperkinetic disorders and almost 400 children with less common disorders in Cambridgeshire.
- In April 2007 there were 365 non-respite Children Looked After in Cambridgeshire, the majority were aged 10 to 15 years. At the same time there were 290 children on the Child Protection Register, with the majority aged under 5 years.
- Just under 10% of Cambridgeshire's population provide care. Of these nearly three-quarters provide under 20 hours of care. At the time of the Census 2001 1,260 children were providing care. Fenland had the highest proportion of such children and a noticeably higher proportion of those children were providing 50 or more hours a week compared to the rest of the county.
- In general childhood immunisation levels are good in Cambridgeshire. All of the former PCT's have higher coverage than seen nationally, with the exception of Cambridge City, which has levels around the national average.

Cambridgeshire County Council

- Indicators where Cambridgeshire County Council is statistically significantly different to England & Wales for selected health measures

Indicator	Statistically significantly	Indicator	Statistically significantly
Conceptions in girls aged under 16 years	Low	Coronary heart disease, aged under 75 years	Low
Conceptions in girls aged under 18 years	Low	Stroke, aged under 75 years	Low
General Fertility Rates, females aged 11-49 years	Low	Cancer, all ages	Low
Low birth weight under 1500 grams	Low	Cancer, aged under 75 years	Low
Stillbirths	Low	Lung cancer, males aged under 75 years	Low
All cause mortality, all ages	Low	Lung cancer, females aged under 75 years	Low
Circulatory disease, all ages	Low	Land based transport accidents, all ages	High
Circulatory disease, aged under 75 years	Low		

- Trends

Indicator	General trend	Sharper than England & Wales	Rate below England & Wales in 2005
Life expectancy - male (data not available)	n/a	n/a	n/a
Life expectancy - female (data not available)	n/a	n/a	n/a
Mortality from all causes, all ages	↓	=	✓
Mortality from all circulatory disease, all ages	↓	x	✓
Mortality from all circulatory disease, under 75 years	↓	=	✓
Mortality from CHD, under 75 years	↓	x	✓
Mortality from stroke, under 75 years	↓	x	✓
Cancer mortality, all ages	↓	x	✓
Cancer mortality, under 75 years	↓	=	✓
Breast cancer mortality, 50-69 years	↓	✓	✓
Incidence of cervical cancer	↓	✓	✓
Lung cancer mortality, under 75 years - male	↓	x	✓
Lung cancer mortality, under 75 years - female	↓	x	✓
Mortality from accidents, 15-24 years	↓	x	x
Mortality from accidents, 65+ years	↓	-	✓
Suicide and injury undetermined, all ages	↓	=	✓

Note : a down arrow indicates a downward trend, an up arrow an upward trend.

A tick indicates that there has been a sharper increase in the districts trend than England & Wales and/or that the rate for 2005 lies below that of England & Wales.

A cross indicates the opposite. A dash is where there is a crossover of trends and an '≡' sign where the rate of change in the trend is the same as England & Wales.

- Progress towards Our Healthier Nation Targets

Target	Currently on target
Circulatory Disease to reduce the death rate from coronary heart disease and stroke and related diseases in people aged under 75 years by at least two fifths by 2010	✓
Cancer to reduce the death rate from cancer in people under 75 years by at least one fifth by 2010	✓
Accidents to reduce the death rates from accidents by at least one fifth and to reduce the rate of serious injury from accidents by at least one tenth by 2010	x
Suicide and Injury Undetermined to reduce the death rate from suicide and undetermined injury by at least one fifth by 2010	x

Note : 'Off' (cross) or 'on' (tick) target does not represent a statistically significant deviation from target, as assessed by the 95% confidence intervals for the latest rate available

Summary : Cambridge City

- It is estimated that there are 113,700 people living in Cambridge City. A fifth of the population is aged under 20 years and an eighth aged 65 years and over. In general the population of Cambridge City is skewed towards the young adult age bands due to the district's large student population. The district also has a considerable population of people aged 85 years and over. Cambridge City is a highly densely populated area.
- It is forecast that Cambridge City is expected to experience a large increase in its population, with a third more residents by 2021. This is as a result mainly from new housing. The district is also expected to see a 40% increase in their child population aged under 20 years and a 46% increase in their older population aged 65 years and over.
- There are on average 1,200 births a year in Cambridge City, with a higher proportion of older maternal age mothers than the county average. It is forecasted that there will be a large increase in the number of births by 2021, as result of the increase in new housing with an associated increase in the number of child-bearing age women.
- There are on average 888 deaths per year in Cambridge City. The district has a statistically significantly low mortality rate when compared to the national rate.
- Life expectancy is higher in Cambridge City, with both males and females expected to live around a year longer than the national average. However, women in Cambridge City can expect to live almost four years longer than men.
- Cambridge City has higher proportions of non-white ethnic groups than seen nationally, and is markedly different to the other districts in Cambridgeshire. The district has a higher proportion of people from Asian, Chinese and other ethnic groups.
- The north east of Cambridge has some of the highest levels of relative deprivation in Cambridgeshire. Namely Kings Hedges, Abbey, East Chesterton and Arbury. These wards also tend to have the higher levels of child poverty. An area within Kings Hedges has 40% of children aged under 16 years living in means tested reliant families. The pattern of older people claiming benefits does not so closely follow this pattern, with areas within King's Hedges, Romsey and Castle having the higher levels. In fact, of the top twenty Super Output Areas in Cambridgeshire for this index, 8 are in Cambridge City.
- Cambridge City has a noticeably higher proportion of people living in rented accommodation, both private and social, and communal establishments than the county average. Less than half of residents own a property. This pattern is also reflected in the housing tenure of dependent children. The large resident student population in Cambridge City has an effect on housing in the district.
- Cambridge City has a noticeably low proportion of married couples, which is offset by a high proportion of single (never married) people and people living in communal establishments. Over a fifth of dependent children are in lone parent families in Cambridge City, which is higher than all the other district and Cambridgeshire (15%). The district also has higher proportion of older people who live alone, especially in people aged 85 years and over.
- Cambridge City has the highest proportions of people for the total population, children and older people living in overcrowded households in Cambridgeshire. A third of all people, a fifth of children and over half of older people living in households in Cambridge City do not have access to a car or a van. This is much higher than the rest of the county, but this is expected given that the district is entirely urban.

Cambridge City continued

- Cambridge City unemployment levels are around the county average, with a slightly higher proportion of unemployed males. The district has a noticeably low proportion where both the parents of dependent children work and a higher proportion of where neither parent working. However, in terms of lone parents Cambridge City has a noticeably higher proportion of working lone parents.
- In general levels of educational attainment are relatively low in Cambridge City, with lower proportions of Key Stage 2 Level 4+ and GCSE attainment than the county average. Cambridge City has the highest proportion of pupils eligible for Free School Meals, with over 1,500 pupils eligible in January 2007.
- Teenage conception rates for both females aged under 16 years and under 18 years are slightly higher than the county rate but do not differ significantly. For the time period 2002 to 2004 Abbey had the highest teenage conception rate for under 18 years olds in Cambridge City.
- Fertility rates are low in Cambridge City, probably as a result of the high student population. For the time period 2003 to 2005 Cambridge City had the highest stillbirth and infant mortality rates in the county, but they did not differ significantly to either the county or national rates.
- At the time of the Census 2001 Cambridge City had a significantly higher number of people who considered themselves to have limiting long term illness compared to the number that would be expected given the size and structure of their population.
- The rates of mortality from all causes, circulatory disease, coronary heart disease, stroke, cancer and land based transport accidents are significantly lower in Cambridge City compared to the national averages.
- Cambridge City has a very low younger persons accident mortality rate but the highest accident mortality rate for older people, though it doesn't differ significantly to national or county averages.
- For 2003 to 2005 Cambridge City had the highest mortality rate for suicide and undetermined injury (but did not differ significantly to Cambridgeshire or England & Wales). It is estimated that in the last week 14,000 people have had a mental health problem in Cambridge City.
- Cambridge City has a higher proportion of older people who provide care than the county average.
- Childhood immunisation rate in Cambridge City are around the national average, whereas the other areas in Cambridgeshire have higher than national rates.

Cambridge City

- Indicators where Cambridge City is statistically significantly different to England & Wales for selected health measures

Indicator	Statistically significantly
Conceptions in girls aged under 18 years	Low
General Fertility Rates, females aged 11-49 years	Low
All cause mortality, all ages	Low
Circulatory disease, all ages	Low
Circulatory disease, aged under 75 years	Low
Coronary heart disease, aged under 75 years	Low
Stroke, aged under 75 years	Low
Cancer, all ages	Low
Cancer, aged under 75 years	Low
Lung cancer, females aged under 75 years	Low
Accidents, aged 15-24 years	Low
Land based transport accidents, all ages	Low

- Trends

Indicator	General trend	Sharper than England & Wales	Rate below England & Wales in 2005
Life expectancy - male	↑	x	x
Life expectancy - female	↑	x	x
Mortality from all causes, all ages	↓	x	✓
Mortality from all circulatory disease, all ages	↓	x	✓
Mortality from all circulatory disease, under 75 years	↓	x	✓
Mortality from CHD, under 75 years	↓	x	✓
Mortality from stroke, under 75 years	↓	x	✓
Cancer mortality, all ages	↓	x	✓
Cancer mortality, under 75 years	↓	x	✓
Breast cancer mortality, 50-69 years	↓	✓	✓
Incidence of cervical cancer	↓	✓	✓
Lung cancer mortality, under 75 years - male	↓	x	x
Lung cancer mortality, under 75 years - female	↑	-	✓
Mortality from accidents, 15-24 years	↓	✓	✓
Mortality from accidents, 65+ years	↓	-	x
Suicide and injury undetermined, all ages	↑	-	✓

Note : a down arrow indicates a downward trend, an up arrow an upward trend.

A tick indicates that there has been a sharper increase in the districts trend than England & Wales and/or that the rate for 2005 lies below that of England & Wales.

A cross indicates the opposite. A dash is where there is a crossover of trends and an '=' sign where the rate of change in the trend is the same as England & Wales.

- Progress towards Our Healthier Nation Targets

Target	Currently on target
Circulatory Disease to reduce the death rate from coronary heart disease and stroke and related diseases in people aged under 75 years by at least two fifths by 2010	✓
Cancer to reduce the death rate from cancer in people under 75 years by at least one fifth by 2010	✓
Accidents to reduce the death rates from accidents by at least one fifth and to reduce the rate of serious injury from accidents by at least one tenth by 2010	✓
Suicide and Injury Undetermined to reduce the death rate from suicide and undetermined injury by at least one fifth by 2010	x

Note : 'Off' (cross) or 'on' (tick) target does not represent a statistically significant deviation from target, as assessed by the 95% confidence intervals for the latest rate available

Summary : East Cambridgeshire

- There are approximately 76,200 people living in East Cambridgeshire, with a quarter of the population aged under 20 years and just under a sixth aged 65 years and over. The district as a whole has a slightly older population when compared to the county average.
- It is forecast that there will be a relatively small population increase in the district, especially when compared to the other local authorities in the county (other than Huntingdonshire). It is expected that there will be a small decrease in the child population and a 53% increase in their population aged 65 years and over.
- There are on average 960 births a year in East Cambridgeshire, with the majority being born to mothers aged 25 to 34 years. The district is the only one in Cambridgeshire to have a noticeably high fertility rate, compared to both the county and national rates. However, it is forecasted that there will be a 20% decrease in the number of births by 2021.
- Life expectancy is high for the district with women expected to live nearly two years longer than the national average and men one and a half years. However, life expectancy difference between the sexes is greatest in East Cambridgeshire compared to the other Cambridgeshire districts, with women expected to live 5 years longer than men.
- The population of East Cambridgeshire is predominantly white with very low proportions of people from non-white ethnic groups. In general, levels of deprivation are relatively low, with the greatest levels seen in Littleport and an area in the east of Ely. Child poverty and poverty affecting older people are also generally low in the district.
- East Cambridgeshire has the highest proportion of people living rent free. The same is true for dependent children. The percentages of married and cohabiting people are high compared to the county average. Three quarters of children live in non-step families. The district also has a high proportion of older pensioners living alone. In general levels of overcrowding, for the whole population, children and older people, are low in East Cambridgeshire. Access to a car or van is slightly higher than the county average, which is true for the total population, children and older people.
- Levels of unemployment are generally low in the district, at around the county average.
- In terms of educational attainment the district has, in general, a slightly below county average proportion of pupils achieving Key Stage 2 Level 4+ and a slightly higher than county average proportion of pupils achieving 5 or more GCSE grades A*-C. The proportion of pupils eligible for Free School Meals is relatively low.
- Teenage conceptions rates for both females aged under 16 years and under 18 years are low for East Cambridgeshire, with the under 16 year old rate significantly lower than the county average and the under 18 year old rate significantly lower than the county and national averages.
- Death rates for all cause mortality, circulatory disease, coronary heart disease, stroke and cancer are significantly lower in East Cambridgeshire compared to the national averages.
- An area where the district appears to be noticeably different to the national average is mortality from land based transport accidents, where the standardised mortality ratio is 81% higher than the England & Wales ratio.
- It is estimated that there are around 8,000 people in East Cambridgeshire who have had a mental health problem in the last week.
- Childhood immunisations are high in the district for uptake by 2nd and 5th birthdays.

East Cambridgeshire

- Indicators where East Cambridgeshire is statistically significantly different to England & Wales for selected health measures

Indicator	Statistically significantly
Conceptions in girls aged under 16 years	Low
Conceptions in girls aged under 18 years	Low
General Fertility Rates, females aged 11-49 years	High
Low birth weight under 2500 grams	Low
All cause mortality, all ages	Low
Circulatory disease, all ages	Low
Circulatory disease, aged under 75 years	Low
Coronary heart disease, aged under 75 years	Low
Stroke, aged under 75 years	Low
Cancer, all ages	Low
Cancer, aged under 75 years	Low
Lung cancer, males aged under 75 years	Low
Lung cancer, females aged under 75 years	Low
Land based transport accidents, all ages	High

- Trends

Indicator	General trend	Sharper than England & Wales	Rate below England & Wales in 2005
Life expectancy - male	↑	x	x
Life expectancy - female	↑	✓	x
Mortality from all causes, all ages	↓	=	✓
Mortality form all circulatory disease, all ages	↓	=	✓
Mortality form all circulatory disease, under 75 years	↓	=	✓
Mortality from CHD, under 75 years	↓	x	✓
Mortality from stroke, under 75 years	↓	✓	✓
Cancer mortality, all ages	↓	✓	✓
Cancer mortality, under 75 years	↓	✓	✓
Breast cancer mortality, 50-69 years	↓	✓	✓
Incidence of cervical cancer	↓	✓	✓
Lung cancer mortality, under 75 years - male	↓	✓	✓
Lung cancer mortality, under 75 years - female	↓	✓	✓
Mortality from accidents, 15-24 years	↑	-	✓
Mortality from accidents, 65+ years	↓	-	✓
Suicide and injury undetermined, all ages	↓	=	✓

Note : a down arrow indicates a downward trend, an up arrow an upward trend.

A tick indicates that there has been a sharper increase in the districts trend than England & Wales and/or that the rate for 2005 lies below that of England & Wales.

A cross indicates the opposite. A dash is where there is a crossover of trends and an '=' sign where the rate of change in the trend is the same as England & Wales.

- Progress towards Our Healthier Nation Targets

Target	Currently on target
Circulatory Disease to reduce the death rate from coronary heart disease and stroke and related diseases in people aged under 75 years by at least two fifths by 2010	✓
Cancer to reduce the death rate from cancer in people under 75 years by at least one fifth by 2010	✓
Accidents to reduce the death rates from accidents by at least one fifth and to reduce the rate of serious injury from accidents by at least one tenth by 2010	x
Suicide and Injury Undetermined to reduce the death rate from suicide and undetermined injury by at least one fifth by 2010	x

Note : 'Off' (cross) or 'on' (tick) target does not represent a statistically significant deviation from target, as assessed by the 95% confidence intervals for the latest rate available

Summary : Fenland

- Fenland has an estimated resident population of 89,900 people, with just under a quarter of the population aged under 20 years and nearly a fifth aged 65 years and over. Fenland has a noticeably older population than the county average.
- It is forecasted that by 2021 the population of Fenland will have increased by 11%. However, there are anticipated changes in the structure of the population with a projected 6% decrease in the child population and 41% increase in the older population.
- There are on average 917 births a year in Fenland, with a skew towards younger mothers. It is forecast that there will be little change in the number of births by 2021. Fenland had the highest teenage conception rate (aged under 18 years) in the county and is slightly higher than the national average. Out of the six wards with the highest under 18 years teenage conception rate in Cambridgeshire five are in Fenland (Waterlees, Slade Lode, Wenneye, Hill and Staithe).
- There are on average 1,040 deaths a year in Fenland. The all cause mortality rate is slightly higher than the national average and is statistically significantly higher than Cambridgeshire's rate.
- Life expectancy is lower in Fenland, with both males and females life expectancy approximately six months lower than the national averages. However, women can expect to live over four years longer than males in Fenland.
- Fenland has a low proportion of people from non-white ethnic groups. However, it is known that the district has significant migrant worker and traveller populations.
- In general, Fenland has the highest level of deprivation in the county, with the greater relative deprivation seen in and around Wisbech. Fenland also has the areas with the greatest proportions of children living in poverty, for example, an area in Waterlees has 48% of children living in means tested benefit reliant families. There is a slight difference in older people living in means tested benefit households, whereby the district does not have the highest levels in the county. However, there are areas within Fenland that have a significant proportion of older people living in poverty. For example, within an area in Waterlees there were 31% of older people were claiming benefits.
- Levels of house ownership are relatively high in Fenland, as is the proportion of people who rent from the council. Fenland has a low proportion of young pensioners that live alone, but then increases to around the county average as age increases.
- Fenland has a higher proportion of people who are widowed than the county average. The district has a higher proportion of lone parent families and step families than seen in Cambridgeshire as a whole. They also have a lower proportion of non-step families.
- Fenland has the second highest proportion of children living in overcrowded households in Cambridgeshire, but the rate is below the national average. This is also true for older people living in overcrowded households.
- In general when compared to the rest of the county (excluding Cambridge City, which has inflated rates) Fenland has low levels of access to a car or van for their total population, dependent children and older people. This has obvious issues with access to services in a predominantly rural area.
- Fenland has the highest unemployment rates in the county, for both males and females.

Fenland continued

- Fenland has relatively low levels of educational attainment. Levels of pupils achieving Key Stage 2 Level 4 are low and GCSE attainment of grades A*-C are noticeably low. The district also has a high proportion of children eligible for Free School Meals.
- Fenland has a higher number of people who classed themselves as having a limiting long term illness at the time of the Census 2001 than would be expected given their population size and structure. This is true for the total population, older people and, most noticeably, children.
- Fenland has a statistically significantly high mortality rate from all circulatory diseases (all ages) compared to the England & Wales rate.
- Accidents are an area where the district differs significantly to the national picture, with significantly high rates for all age accident mortality and young people accident mortality. However, the district has the lowest older people deaths from accidents in the county. Fenland has a standardised mortality ratio for mortality for land based transport accidents that is over double the national ratio.
- It is estimated that 9,000 people have had a mental health problem in the last week in Fenland.
- Fenland has a high proportion of carers who provide the most amount of care in a week, with a quarter of carers providing over 50 hours of care a week. Fenland also has the highest proportion of child carers, and they too provide a significant amount of care, with 10% of child carers providing 20 to 49 hours of care and 7% providing 50 hours and over. Fenland has the lowest proportion of older people providing care.

Fenland

- Indicators where Fenland is statistically significantly different to England & Wales for selected health measures

Indicator	Statistically significantly
Low birth weight under 1500 grams	Low
Circulatory disease, all ages	High
Accidents, all ages	High
Accidents, aged 15-24 years	High
Land based transport accidents, all ages	High

- Trends

Indicator	General trend	Sharper than England & Wales	Rate below England & Wales in 2005
Life expectancy - male	↑	x	✓
Life expectancy - female	↑	x	✓
Mortality from all causes, all ages	↓	x	x
Mortality form all circulatory disease, all ages	↓	x	x
Mortality form all circulatory disease, under 75 years	↓	x	x
Mortality from CHD, under 75 years	↓	=	x
Mortality from stroke, under 75 years	↓	x	x
Cancer mortality, all ages	↓	=	✓
Cancer mortality, under 75 years	↓	✓	✓
Breast cancer mortality, 50-69 years	↓	✓	x
Incidence of cervical cancer	↓	-	x
Lung cancer mortality, under 75 years - male	↓	✓	✓
Lung cancer mortality, under 75 years - female	↑	-	x
Mortality from accidents, 15-24 years	↓	✓	x
Mortality from accidents, 65+ years	↓	-	x
Suicide and injury undetermined, all ages	↓	x	✓

Note : a down arrow indicates a downward trend, an up arrow an upward trend.

A tick indicates that there has been a sharper increase in the districts trend than England & Wales and/or that the rate for 2005 lies below that of England & Wales.

A cross indicates the opposite. A dash is where there is a crossover of trends and an '=' sign where the rate of change in the trend is the same as England & Wales.

- Progress towards Our Healthier Nation Targets

Target	Currently on target
Circulatory Disease to reduce the death rate from coronary heart disease and stroke and related diseases in people aged under 75 years by at least two fifths by 2010	✓
Cancer to reduce the death rate from cancer in people under 75 years by at least one fifth by 2010	✓
Accidents to reduce the death rates from accidents by at least one fifth and to reduce the rate of serious injury from accidents by at least one tenth by 2010	x
Suicide and Injury Undetermined to reduce the death rate from suicide and undetermined injury by at least one fifth by 2010	✓

Note : 'Off' (cross) or 'on' (tick) target does not represent a statistically significant deviation from target, as assessed by the 95% confidence intervals for the latest rate available

Summary : Huntingdonshire

- It is estimated that there are 160,800 people living in Huntingdonshire, with a quarter of the population aged under 20 years and just over a seventh aged 65 years and over. Huntingdonshire has a significant child population with almost 30% of the county's total child population.
- It is forecast that there will be a small increase in Huntingdonshire's population by 2021. However, it is predicted that there will be a fairly significant decrease in the child population, with just under a fifth of a reduction in the current number of children aged under 20 years. Conversely, the proportional increase expected in their older population (aged 65 years and over) is the second greatest in the county, at 61%.
- There on average 1,855 births a year in Huntingdonshire, with the majority born to mothers aged 20 to 34 years. It is forecasted that there will be a 10% reduction in the number of births by 2021. There are on average 1,244 deaths a year in Huntingdonshire, with a mortality rate that is significantly lower than the national average.
- Life expectancy is high in Huntingdonshire, with women expecting to live six months longer than the national average and men one and a half years longer. However, women can expect to live over three years longer than men in Huntingdonshire.
- Huntingdonshire has low proportion of people from non-white ethnic groups, for the total population, children and older people.
- Huntingdonshire generally has low levels of deprivation. However, there are areas within the district that have high levels of relative deprivation in comparison to the rest of the county, namely within Huntingdon and St Neots. The same is true for child poverty where an area within Huntingdon North has 40% of children living in means tested benefit reliant families. The district also has the highest area of older people living on benefits, with 34% of older people living in an area within Huntingdon West on benefits.
- In general Huntingdonshire has high levels of house ownership and a high proportion of people living in a couple (married or cohabiting). There are low proportions of children and older people living in overcrowded households. Lack of accessibility to a car or van is generally low in Huntingdonshire. Unemployment rates for the district are around the county average and over half of lone parents do not work.
- Huntingdonshire has above average Key Stage 2 Level 4+ attainment, average GCSE attainment for 5 or more grades A*-C and low eligibility for Free School Meals, compared to the county averages.
- Huntingdonshire has average teenage conceptions for females aged under 16 years and under 18 years when compared to the county but they are statistically significantly low compared to England & Wales.
- Huntingdonshire has the highest cancer mortality rate for people aged under 75 years in Cambridgeshire, but does not differ significantly to either the county or national rates. Likewise, the same is true for lung cancer mortality in females aged under 75 years.
- Accident mortality rates for all ages, young people and older people are all higher than the county and national average rates, but they do not differ significantly. However, Huntingdonshire does have a high land based transport accident ratio, at 61% higher than the national ratio.
- It is estimated that 17,500 people have had a mental health problem in the last week in Huntingdonshire.
- Children provide high levels of care in Huntingdonshire, with 10% of such child carers providing 50 hours or more care.
- Childhood immunisations are high in the district for uptake by 2nd and 5th birthdays.

Huntingdonshire

- Indicators where Huntingdonshire is statistically significantly different to England & Wales for selected health measures

Indicator	Statistically significantly
Conceptions in girls aged under 16 years	Low
Conceptions in girls aged under 18 years	Low
All cause mortality, all ages	Low
Circulatory disease, all ages	Low
Circulatory disease, aged under 75 years	Low
Coronary heart disease, aged under 75 years	Low
Stroke, aged under 75 years	Low
Cervical cancer registrations, females all ages	Low
Land based transport accidents, all ages	High
Mean number of decayed, filled or missing teeth in 5 year olds	Low

- Trends

Indicator	General trend	Sharper than England & Wales	Rate below England & Wales in 2005
Life expectancy - male	↑	✓	×
Life expectancy - female	↑	×	×
Mortality from all causes, all ages	↓	✓	✓
Mortality from all circulatory disease, all ages	↓	✓	✓
Mortality from all circulatory disease, under 75 years	↓	=	✓
Mortality from CHD, under 75 years	↓	✓	✓
Mortality from stroke, under 75 years	↓	×	✓
Cancer mortality, all ages	↓	✓	✓
Cancer mortality, under 75 years	↓	×	✓
Breast cancer mortality, 50-69 years	↓	✓	✓
Incidence of cervical cancer	↓	✓	✓
Lung cancer mortality, under 75 years - male	↓	×	✓
Lung cancer mortality, under 75 years - female	↑	-	×
Mortality from accidents, 15-24 years	↓	×	×
Mortality from accidents, 65+ years	↑	=	×
Suicide and injury undetermined, all ages	↓	✓	✓

Note : a down arrow indicates a downward trend, an up arrow an upward trend.

A tick indicates that there has been a sharper increase in the districts trend than England & Wales and/or that the rate for 2005 lies below that of England & Wales.

A cross indicates the opposite. A dash is where there is a crossover of trends and an '=' sign where the rate of change in the trend is the same as England & Wales.

- Progress towards Our Healthier Nation Targets

Target	Currently on target
Circulatory Disease to reduce the death rate from coronary heart disease and stroke and related diseases in people aged under 75 years by at least two fifths by 2010	✓
Cancer to reduce the death rate from cancer in people under 75 years by at least one fifth by 2010	×
Accidents to reduce the death rates from accidents by at least one fifth and to reduce the rate of serious injury from accidents by at least one tenth by 2010	×
Suicide and Injury Undetermined to reduce the death rate from suicide and undetermined injury by at least one fifth by 2010	✓

Note : 'Off' (cross) or 'on' (tick) target does not represent a statistically significant deviation from target, as assessed by the 95% confidence intervals for the latest rate available

Summary : South Cambridgeshire

- It is estimated that there are 138,000 people living in South Cambridgeshire, with approximately a quarter of the population aged under 20 years and just under a sixth of people aged 65 years and over.
- It is forecasted that the district will experience a large increase in their population, with a quarter more people by 2021, mainly due to the establishment of the new proposed town Northstowe. Associated with this is an increase in the child population (14%) and a significant increase in the older population (87%).
- There are on average 1,580 births a year in South Cambridgeshire, with a higher proportion of older mothers. It is estimated that there will be a 6% increase in births by 2021.
- There are on average 1,054 deaths a year in South Cambridgeshire, with an all cause mortality rate that is significantly low compared to England & Wales.
- South Cambridgeshire has the highest life expectancy for both males and females in Cambridgeshire, with males expected to live two and a half year longer than the national average and females almost 3 years. However, women are expected to live over four and a half years longer than males.
- Overall South Cambridgeshire has a small population of people from non-white ethnic groups. However, the district does have a sizeable traveller population.
- South Cambridgeshire is a relatively affluent area, which is reflected in the low levels of deprivation.
- In comparison to the Cambridgeshire average house ownership is high in South Cambridgeshire, as is the proportion of married people and the proportion of dependent children living in non-step families. The proportion of young pensioners living alone is low but increases with age. Levels of overcrowding for all people, children and older people are low, with half the national average for older people. Accessibility to a car or van is high in South Cambridgeshire. Unemployment rates are generally low in South Cambridgeshire. The district has a higher proportion of lone parents that do not work.
- In general educational attainment is high in South Cambridgeshire, with noticeably high Key Stage 2 Level 4+ and GCSE 5 or more grades A*-C compared to the county average. In fact, on all the educational attainment indicators South Cambridgeshire has the highest levels of attainment of all the Cambridgeshire districts. Eligibility for Free School Meals is low.
- Teenage conceptions for females aged under 16 years and under 18 years are low in South Cambridgeshire.
- South Cambridgeshire has the highest cervical cancer registration rate but it does not differ significantly to the England & Wales rate. Likewise South Cambridgeshire has a 24% higher prostate cancer mortality ratio than the national ratio, but it does not differ significantly.
- Death rates for all cause mortality, circulatory disease, coronary heart disease, stroke and cancer are significantly lower in South Cambridgeshire compared to the national averages.
- For the time period 2003 to 2005 South Cambridgeshire had a relatively high suicide and undetermined injury mortality rate, but it did not differ significantly to either the national or county rates. It is estimated that there were 15,000 people who had a mental health problem in South Cambridgeshire in the last week.
- Childhood immunisation uptake is generally higher in South Cambridgeshire than seen nationally.

South Cambridgeshire

- Indicators where South Cambridgeshire is statistically significantly different to England & Wales for selected health measures

Indicator	Statistically significantly
Conceptions in girls aged under 16 years	Low
Conceptions in girls aged under 18 years	Low
Low birth weight under 2500 grams	Low
Stillbirths	Low
Infant Mortality rates	Low
All cause mortality, all ages	Low
Circulatory disease, all ages	Low
Circulatory disease, aged under 75 years	Low
Coronary heart disease, aged under 75 years	Low
Stroke, aged under 75 years	Low
Cancer, all ages	Low
Cancer aged under 75 years	Low
Lung cancer, males aged under 75 years	Low
Lung cancer, females aged under 75 years	Low
Mean number of decayed, filled or missing teeth in 5 year olds	Low

- Trends

Indicator	General trend	Sharper than England & Wales	Rate below England & Wales in 2005
Life expectancy - male	↑	✓	x
Life expectancy - female	↑	✓	x
Mortality from all causes, all ages	↓	=	✓
Mortality from all circulatory disease, all ages	↓	x	✓
Mortality from all circulatory disease, under 75 years	↓	x	✓
Mortality from CHD, under 75 years	↓	x	✓
Mortality from stroke, under 75 years	↓	x	✓
Cancer mortality, all ages	↓	x	✓
Cancer mortality, under 75 years	↓	=	✓
Breast cancer mortality, 50-69 years	↓	✓	✓
Incidence of cervical cancer	↑	-	✓
Lung cancer mortality, under 75 years - male	↓	x	✓
Lung cancer mortality, under 75 years - female	↓	✓	✓
Mortality from accidents, 15-24 years	↑	-	x
Mortality from accidents, 65+ years	↓	-	✓
Suicide and injury undetermined, all ages	↑	-	✓

Note : a down arrow indicates a downward trend, an up arrow an upward trend.

A tick indicates that there has been a sharper increase in the districts trend than England & Wales and/or that the rate for 2005 lies below that of England & Wales.

A cross indicates the opposite. A dash is where there is a crossover of trends and an '=' sign where the rate of change in the trend is the same as England & Wales.

- Progress towards Our Healthier Nation Targets

Target	Currently on target
Circulatory Disease to reduce the death rate from coronary heart disease and stroke and related diseases in people aged under 75 years by at least two fifths by 2010	✓
Cancer to reduce the death rate from cancer in people under 75 years by at least one fifth by 2010	✓
Accidents to reduce the death rates from accidents by at least one fifth and to reduce the rate of serious injury from accidents by at least one tenth by 2010	x
Suicide and Injury Undetermined to reduce the death rate from suicide and undetermined injury by at least one fifth by 2010	x

Note : 'Off' (cross) or 'on' (tick) target does not represent a statistically significant deviation from target, as assessed by the 95% confidence intervals for the latest rate available

Demography

The following section examines current population estimates, the registered population of Cambridgeshire PCT, population forecasts, births, life expectancy and ethnicity.

Population estimates

- Total population : population estimates, mid 2006**

Office for National Statistics

Local Authority	Population
Cambridge	117,900
East Cambridgeshire	79,600
Fenland	90,100
Huntingdonshire	166,600
South Cambridgeshire	135,400
Cambridgeshire	589,600

Source : Office for National Statistics website
www.statistics.gov.uk

Definition : Mid 2006 population estimates based on the 2001 Census population

Cambridgeshire County Council

Local Authority	Population
Cambridge	113,700
East Cambridgeshire	76,200
Fenland	89,900
Huntingdonshire	160,800
South Cambridgeshire	138,000
Cambridgeshire	578,600

Source : Cambridgeshire County Council Research Group

Definition : Mid 2006 population estimates

Note: Differences between the ONS and Research Group population estimates are due to the County Council's use of local information such as planning policy, changes in armed forces, students, school rolls and, in particular, migration.

- Total population : population estimates, mid 2006**

Local Authority	0-4	5-14	15-24	25-34	35-44	45-54	55-64	65-74	75-84	85+	Total
Cambridge City	5,300 4%	9,600 8%	29,900 25%	22,600 19%	15,600 13%	11,400 10%	9,500 8%	6,500 6%	5,200 4%	2,200 2%	117,900
East Cambridgeshire	5,000 6%	9,500 12%	8,300 10%	9,800 12%	12,900 16%	12,900 16%	10,100 13%	7,000 9%	4,600 6%	1,700 2%	79,600
Fenland	4,700 5%	10,900 12%	9,700 11%	9,600 11%	13,400 15%	13,400 15%	12,200 14%	9,300 10%	6,200 7%	2,100 2%	90,100
Huntingdonshire	9,500 6%	21,700 13%	19,200 12%	20,500 12%	28,100 17%	28,100 17%	21,300 13%	12,700 8%	7,800 5%	2,800 2%	166,600
South Cambridgeshire	8,300 6%	16,900 12%	14,500 11%	15,900 12%	22,100 16%	22,100 16%	17,600 13%	10,700 8%	7,300 5%	2,800 2%	135,400
Cambridgeshire	32,800 6%	68,700 12%	81,600 14%	78,500 13%	92,000 16%	92,000 16%	70,800 12%	46,200 8%	31,100 5%	11,700 2%	589,600

Source : Office for National Statistics

Definition : Mid 2006 population estimates

Cambridge City has a noticeably higher proportion of people aged 15-34 years. This is due to the high student population in the district.

• **Children (aged 0-19 years) : population estimates, mid 2006**

Local Authority	0-4 years	5-9 years	10-14 years	15-19 years	0-19 years	Total
Cambridge City	5,606	5,087	4,983	8,460	24,136	113,661
% of Total	5%	4%	4%	7%	21%	
East Cambridgeshire	4,861	4,663	4,518	4,592	18,634	76,231
% of Total	6%	6%	6%	6%	24%	
Fenland	4,701	5,408	5,963	5,048	21,120	89,882
% of Total	5%	6%	7%	6%	23%	
Huntingdonshire	9,183	10,252	11,010	9,812	40,257	160,813
% of Total	6%	6%	7%	6%	25%	
South Cambridgeshire	8,187	8,661	8,750	8,243	33,841	138,032
% of Total	6%	6%	6%	6%	25%	
Cambridgeshire Total	32,538	34,071	35,224	36,155	137,988	578,619
% of Total	6%	6%	6%	6%	24%	

Source :
Cambridgeshire County
Council Research
Group

Definition : Mid 2006
population estimates

There are nearly 138,000 children living in Cambridgeshire, with by far the majority living in Huntingdonshire (29% of all children). Cambridge City has the lowest proportion of children in their overall population, with one child per five people (compared to a county average of one child per four children).

• **Older people (aged 65+ years) : population estimates, mid 2006**

Local Authority	65-74 years	75-84 years	85+ years	65+ years	75+ years	Total
Cambridge City	6,556	5,117	2,107	13,780	7,224	113,661
% of total	5.8%	4.5%	1.9%	12.1%	6.4%	
East Cambridgeshire	6,560	4,576	1,515	12,651	6,091	76,231
% of total	8.6%	6.0%	2.0%	16.6%	8.0%	
Fenland	9,068	6,372	1,931	17,371	8,303	89,882
% of total	10.1%	7.1%	2.1%	19.3%	9.2%	
Huntingdonshire	12,548	7,500	2,679	22,727	10,179	160,813
% of total	7.8%	4.7%	1.7%	14.1%	6.3%	
South Cambridgeshire	11,144	7,456	2,898	21,498	10,354	138,032
% of total	8.1%	5.4%	2.1%	15.6%	7.5%	
Cambridgeshire Total	45,876	31,021	11,130	88,027	42,151	578,619
% of total	7.9%	5.4%	1.9%	15.2%	7.3%	

Source :
Cambridgeshire County
Council Research
Group

Definition : Mid 2006
population estimates

There are just over 88,000 people aged 65 years or over (15% of the total population) and over 42,000 people aged 75 years or over (7% of the total population) in Cambridgeshire. However, there is local variation within the county with Fenland having 19% of its population aged over 65 and 9% over 75 compared to Cambridge City having 12% of its population aged over 65 and 6% aged over 75.

• **General Practice registered population : Cambridgeshire PCT, July 2007**

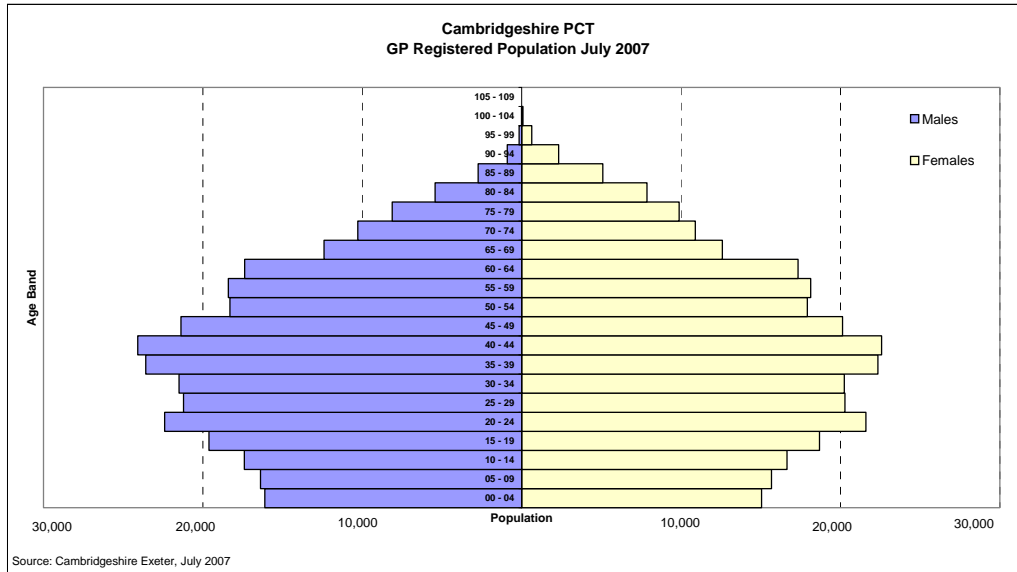
Sex	0-4	5-14	15-24	25-34	35-44	45-54	55-65	65-74	75-84	85+	Total
Males	16,115	33,786	42,020	42,709	47,669	39,672	35,781	22,688	13,549	3,816	297,805
Females	15,047	32,308	40,276	40,515	44,932	38,043	35,474	23,477	17,726	8,136	295,934
Total	31,162	66,094	82,296	83,224	92,601	77,715	71,255	46,165	31,275	11,952	593,739
% of total	5%	11%	14%	14%	16%	13%	12%	8%	5%	2%	100%

Source :
Quarterly Practice Age Sex Breakdowns (Exeter system), Anglia Support Partnership, July 2007

Definition : The number of people registered with a GP Practice in Cambridgeshire PCT. Includes people living outside the Cambridgeshire and Peterborough boundary.

There are nearly 594,00 people registered with a GP practice in the Cambridgeshire PCT area.

- Registered population : Cambridgeshire PCT, July 2007



Source : Quarterly Practice Age Sex Breakdowns (Exeter system), Anglia Support Partnership, July 2007

Definition : The number of people registered with a GP Practice in Cambridgeshire PCT. Includes people living outside the Cambridgeshire and Peterborough boundary.

It is apparent that there are more females than males in the older age bands.

- Geographical Area Covered and Population Density, Local Authority

Local Authority	Hectares	Mid 2006 population estimates	Population per hectare
Cambridge City	4,056	113,661	28.0
East Cambridgeshire	64,941	76,231	1.2
Fenland	54,545	89,882	1.6
Huntingdonshire	90,953	160,813	1.8
South Cambridgeshire	89,862	138,032	1.5
Cambridgeshire County	304,356	578,619	1.9

Source : Population – www.national-statistics.co.uk
Hectares – Cambridgeshire Observatory
<http://www.cambridgeshire.gov.uk/observatory>

Definition : Area in hectares covered by the Local Authorities and population density per hectare

It is apparent that Cambridge City is by far the smallest Local Authority in terms of area but it has the greatest population density. East Cambridgeshire is the least densely populated Local Authority. The low population density indicates that, in general, Cambridgeshire is a relatively rural area.

Population forecasts

• Total population : population forecasts, mid 2005 based

Local Authority	2006 population forecast	2011 population forecast	2016 population forecast	2021 population forecast	% change 2006 to 2021
Cambridge City	113,600	131,700	147,700	149,400	31.5%
East Cambridgeshire	76,400	80,700	82,200	81,300	6.4%
Fenland	89,800	91,700	95,400	99,700	11.0%
Huntingdonshire	160,800	168,200	166,000	166,300	3.4%
South Cambridgeshire	138,200	150,400	162,000	172,700	25.0%
Cambridgeshire County	579,000	622,700	653,300	669,400	15.6%

Source :
Cambridgeshire County Council Research Group 2005-based ward age-group forecasts.

Website:
<http://www.cambridgeshire.gov.uk/community/population/>

Definition : Mid 2005 population estimates and population forecasts to 2021

By 2021 it is estimated that there will be a further 90,000 people living in Cambridgeshire. The biggest actual increases and also proportional increases are expected in South Cambridgeshire and Cambridge City.

Note: These forecasts have been produced using specific assumptions and may not be appropriate for all uses. These forecasts remain subject to revision. These figures have been rounded to the nearest 100. Totals may not add due to rounding. These forecasts are indicative and do not represent the policy of the County Council or any District Council.

• Children (aged 0-19 years) : population forecasts, mid 2005 based

Local Authority	Forecast				% Difference				Actual change 2006-2021
	2006	2011	2016	2021	2006-2011	2011-2016	2016-2021	2006-2021	
Cambridge City	24,100	27,000	31,100	33,800	12.0%	15.2%	8.7%	40.2%	9,700
East Cambridgeshire	18,600	18,800	18,600	17,700	1.1%	-1.1%	-4.8%	-4.8%	-900
Fenland	21,100	20,800	19,900	19,800	-1.4%	-4.3%	-0.5%	-6.2%	-1,300
Huntingdonshire	40,300	39,200	35,600	33,400	-2.7%	-9.2%	-6.2%	-17.1%	-6,900
South Cambridgeshire	33,800	35,500	37,300	38,500	5.0%	5.1%	3.2%	13.9%	4,700
Cambridgeshire	138,000	141,300	142,400	143,300	2.4%	0.8%	0.6%	3.8%	5,300

Source :
Cambridgeshire County Council Research Group 2005-based ward age-group forecasts.

Definition : Mid 2005 population estimates and population forecasts to 2021

The population of 0 to 19 years olds is expected to increase by 4% (5,300 children) between 2006 and 2021 in Cambridgeshire. Cambridge City and South Cambridgeshire are projected to have noticeable increases in this population and Huntingdonshire a noticeable decrease. In fact, by 2021 Cambridge City is forecasted to have 40% (9,700) more 0 to 19 year olds than at present, from the latest population estimates. Huntingdonshire is expected to see a 17% decline in this population (6,900 children).

Note: These forecasts have been produced using specific assumptions and may not be appropriate for all uses. These forecasts remain subject to revision. These figures have been rounded to the nearest 100. Totals may not add due to rounding. These forecasts are indicative and do not represent the policy of the County Council or any District Council.

• Older people (aged 65+ years) : population forecasts, mid 2005 based

Local Authority	Forecast				% Difference				Actual change 2006-2021
	2006	2011	2016	2021	2006-2011	2011-2016	2016-2021	2006-2021	
Cambridge City	13,800	15,200	17,700	20,200	10.1%	16.4%	14.1%	46.4%	6,400
East Cambridgeshire	12,700	14,600	17,300	19,400	15.0%	18.5%	12.1%	52.8%	6,700
Fenland	17,400	19,000	22,000	24,600	9.2%	15.8%	11.8%	41.4%	7,200
Huntingdonshire	22,700	27,200	32,900	36,500	19.8%	21.0%	10.9%	60.8%	13,800
South Cambridgeshire	21,500	27,000	34,300	40,100	25.6%	27.0%	16.9%	86.5%	18,600
Cambridgeshire	88,100	103,000	124,200	140,800	16.9%	20.6%	13.4%	59.8%	52,700

Source :
Cambridgeshire County Council Research Group 2005-based ward age-group forecasts.

Definition : Mid 2005 population estimates and population forecasts to 2021

The population composed of people aged over 65 is forecast to increase by 60% (52,700 people aged 65+ years) between 2006 and 2021 in Cambridgeshire. The greatest proportional increase is expected to be in South Cambridgeshire at 87% between 2006 and 2021. The rate at which the older people population is increasing is projected to slow down towards the end of the same period.

Note: These forecasts have been produced using specific assumptions and may not be appropriate for all uses. These forecasts remain subject to revision. These figures have been rounded to the nearest 100. Totals may not add due to rounding. These forecasts are indicative and do not represent the policy of the County Council or any District Council.

Births

• Live births by Maternal age, Local Authority, 2005

Local Authority	11-15		16-19		20-24		25-34		35-39		40+		Total
	No	%	No.	%	No	%	No	%	No	%	No	%	
England and Wales	1,189	0.2	43,633	6.8	122,110	18.9	352,384	54.6	104,079	16.1	22,226	3.4	645,621
Cambridge	3	0.3	52	4.4	169	14.2	664	55.8	235	19.8	66	5.6	1,189
East Cambridgeshire	0	0.0	44	4.6	126	13.1	601	62.3	162	16.8	31	3.2	964
Fenland	1	0.1	71	7.7	234	25.5	496	54.1	91	9.9	24	2.6	917
Huntingdonshire	1	0.1	89	4.8	284	15.3	1,103	59.5	316	17.0	62	3.3	1,855
South Cambridgeshire	1	0.1	44	2.8	158	10.0	949	60.1	362	22.9	66	4.2	1,580
Cambridgeshire	6	0.1	300	4.6	971	14.9	3,813	58.6	1,166	17.9	249	3.8	6,505

Source : Compendium of Clinical and Health Indicators 2005 based on ONS VS2 birth tables

Definition : The number of live births to mothers resident in an area by age

In general Cambridge City and South Cambridgeshire have higher proportions of live births in the older maternal age bands and Fenland a higher proportion in the younger age bands. Overall, Cambridgeshire has higher proportions of births in the older age groups and lower proportions in the younger age groups compared to England & Wales.

• Births : Forecasts, mid 2005 based

Local Authority	Forecast				% Difference				Actual change 2006-2021
	2006	2011	2016	2021	2006-2011	2011-2016	2016-2021	2006-2021	
Cambridge City	1,184	1,401	1,715	1,698	18.4%	22.4%	-1.0%	43.5%	515
East Cambridgeshire	961	904	868	784	-6.0%	-4.0%	-9.7%	-18.5%	-178
Fenland	931	869	869	926	-6.6%	-0.1%	6.6%	-0.6%	-5
Huntingdonshire	1,860	1,810	1,728	1,675	-2.7%	-4.6%	-3.1%	-10.0%	-185
South Cambridgeshire	1,590	1,570	1,648	1,683	-1.2%	5.0%	2.1%	5.8%	93
Cambridgeshire	6,526	6,555	6,828	6,765	0.4%	4.2%	-0.9%	3.7%	239

Source : Cambridgeshire County Council Research Group, mid 2005 based

Definition : The forecasted number of live births by district

Cambridge City is expected to experience a considerable increase in the number of births. This is as a result of an increase in house-building with an associated forecasted increase in a new population of women in the key child bearing age groups. Across Cambridgeshire a moderate increase of 4% is expected.

• Life Expectancy at Birth, Local Authority, 2003 – 2005

Local Authority	Male	Female
	2003-2005	2003-2005
England & Wales	76.9	81.1
Cambridge	78.1	82.0
East Cambridgeshire	78.3	83.0
Fenland	76.4	80.7
Huntingdonshire	78.5	81.8
South Cambridgeshire	79.3	83.9

Source : Compendium of Clinical and Health Indicators 2005 (Dec 2006)

Definition : An estimate of the number of years a new born baby would survive, were he or she to experience a particular area's age-specific mortality rates for that time period throughout

In general life expectancy is high across Cambridgeshire. However, Fenland has slightly lower levels of life expectancy than England and Wales for both males and females. In all districts women can expect to live longer than males, with the greatest difference seen in East Cambridgeshire where women can expect to live almost five years longer than men.

• **Ethnicity : Total population, Local Authority, 2001**

Percentage	England and Wales	Cambridge	East Cambridgeshire	Fenland	Huntingdonshire	South Cambridgeshire
White	90.9	89.4	97.9	98.6	97.2	97.1
Mixed	1.3	2.0	0.7	0.6	0.9	0.9
Asian or Asian British	4.6	3.8	0.5	0.4	0.9	0.9
Indian	2.1	1.8	0.3	0.2	0.4	0.5
Pakistani	1.4	0.5	0.1	0.0	0.4	0.1
Bangladeshi	0.6	0.9	0.1	0.1	0.1	0.1
Other Asian	0.5	0.6	0.1	0.1	0.1	0.2
Black or Black British	2.1	1.3	0.3	0.2	0.5	0.4
Caribbean	1.1	0.5	0.1	0.1	0.2	0.2
African	1.0	0.7	0.1	0.1	0.1	0.2
Other Black	0.2	0.1	0.1	0.0	0.2	0.1
Chinese or Other Ethnic Group	0.9	3.5	0.7	0.3	0.5	0.8

Source : Census 2001 © Crown Copyright 2003 - **Definition** : Percentage of all people by ethnic group Table KS06

In general most Local Authorities in Cambridgeshire have small proportions of minority ethnic residents. However, Cambridge City has higher proportions of minority ethnic groups than England and Wales, with a higher proportion of people from 'Chinese or Other Ethnic Groups'. Cambridgeshire also has considerable populations of travellers, migrant workers and students.

• **Ethnicity : All ages, Cambridgeshire, 2001 and 2004 estimates**

	Number of people		% of Population	
	2001	2004	2001	2004
White	531,600	544,500	95.8%	94.1%
White: British	504,100	511,100	90.9%	88.3%
White: Irish	4,900	5,300	0.9%	0.9%
White: Other White	22,600	28,100	4.1%	4.9%
Mixed	5,900	7,500	1.1%	1.3%
Asian or Asian British	7,700	11,400	1.4%	2.0%
Indian	3,700	5,600	0.7%	1.0%
Pakistani	1,400	2,300	0.3%	0.4%
Bangladeshi	1,400	1,700	0.3%	0.3%
Other Asian	1,200	1,800	0.2%	0.3%
Black or Black British	3,400	6,100	0.6%	1.1%
Black Caribbean	1,300	2,200	0.2%	0.4%
Black African	1,400	3,000	0.3%	0.5%
Other Black	700	900	0.1%	0.2%
Chinese or Other Ethnic group	6,400	9,500	1.2%	1.6%
Total	554,700	578,900	100%	100%

Source : ONS Population Estimates by ethnic group 2001 – 2004 (Experimental), 2006

Definition : Number of people by ethnic group and proportion of total population.

It is estimated that the proportion of people from non-white ethnic groups has increased between 2001 and 2004, with all of these ethnic groups having experienced a proportional increase.

• **Ethnicity : Children (school age), Local Authority, 2001**

Ethnicity		Cambridge City	East Cambridgeshire	Fenland	Huntingdonshire	South Cambridgeshire	Cambridgeshire
White	British	7,194	8,997	11,620	21,928	15,929	65,668
	Irish	71	12	15	51	63	212
	Roma/Roma Gypsy	9	61	97	49	125	341
	Traveller - Irish Heritage	17	13	3	10	74	117
	Other	895	353	304	559	801	2,912
	Total	8,186	9,436	12,039	22,597	16,992	69,250
Mixed	White/Asian	158	41	42	130	154	525
	White/Black African	86	16	20	85	49	256
	White/Black Caribbean	154	25	40	118	84	421
	Other	274	109	71	242	211	907
	Total	672	191	173	575	498	2,109
Asian	Indian	192	30	50	85	181	538
	Pakistani	72	4	1	202	29	308
	Bangladeshi	387	13	11	58	33	502
	Other	227	21	49	126	133	556
	Total	878	68	111	471	376	1,904
Black	African	86	24	30	85	82	307
	Caribbean	80	6	14	23	34	157
	Other	36	15	15	34	24	124
	Total	202	45	59	142	140	588
Chinese		154	38	26	80	109	407
Other Ethnic Group		163	29	32	65	74	363
Unknown (data not obtained or refusal)		185	104	106	442	340	1,177
Total		10,440	9,911	12,546	24,372	18,529	75,798

Source : School Census 2007, Office of Children and Young People's Services, Cambridgeshire County Council

Definition : Percentage of all children by ethnic group

Cambridgeshire has a predominantly 'White' ethnic child population, but there are variations across the county. The most noticeable difference is in Cambridge City, where the district has the highest numbers and proportions of school pupils from Mixed, Asian, Black and Chinese ethnic groups. South Cambridgeshire has the highest number of pupils from 'Roma/Roma Gypsy' and 'Traveller – Irish Heritage' ethnic groups.

• **Ethnicity : Older people (Women 60+ years, Men aged 65+ years), Cambridgeshire, 2001 and 2004**

	2001	2004	% female	
			2001	2004
Women 60+				
Men 65+				
White: British	90,900	96,100	63%	62%
White: Irish	1,100	1,400	64%	64%
White: Other White	2,000	2,400	62%	63%
Mixed	200	200	—	—
Asian or Asian British	500	600	50%	80%
Black or Black British	100	300	50%	67%
Chinese or Other Ethnic group	200	300	100%	67%
Total	95,000	101,300	63%	62%

Source : ONS Population Estimates by ethnic group 2001 – 2004 (Experimental), 2006

Definition : Number of older people by ethnic group and proportion who are female. Men aged 65+ years and women aged 60+ years.

Cambridgeshire has a predominantly white older population, with estimated increases seen in all ethnic groups between 2001 and 2004. It is apparent that there is a high proportion of older female Asian or Asian British people in Cambridgeshire, 80% females compared to 20% males.

Social and environmental context

- Indices of Deprivation 2004, Local Authority, Average of SOA scores**

Local Authority	Average of SOA Scores	Rank (England)
Cambridge	14.58	218
East Cambridgeshire	10.61	282
Fenland	19.76	142
Huntingdonshire	10.18	291
South Cambridgeshire	6.39	345

Source : DETR Indices of Deprivation 2004, ODPM

Definition : The Indices of Deprivation 2004 include deprivation domains at super output area (SOA) for income,

employment, health and disability, housing, geographical access to services and education, skills and training. An average score has been calculated for each local authority district based on SOA scores weighted according to their population. This measure takes into account the full range of scores across a district and averages the SOA scores in each district after they have been population weighted. A national rank is also provided where 1 is the most deprived Local Authority in England and 354 the least deprived

Deprivation levels vary widely across Cambridgeshire, with Fenland having the greater relative deprivation and South Cambridgeshire the lesser. South Cambridgeshire is the ninth least deprived local authority in England. There are pockets of deprivation in all of the districts.

- Income Deprivation Affecting Children Index (IDACI), 2004, Top Twenty Super Output Areas in Cambridgeshire 2004**

SOA	Ward	Local Authority	IDACI Score	National Rank
E01018108	Waterlees	Fenland	0.48	2658
E01018103	Staithe	Fenland	0.40	4690
E01018144	Huntingdon North	Huntingdonshire	0.40	4725
E01017979	King's Hedges	Cambridge	0.40	4762
E01017978	King's Hedges	Cambridge	0.38	5419
E01017971	East Chesterton	Cambridge	0.37	5559
E01018107	Waterlees	Fenland	0.37	5663
E01017974	East Chesterton	Cambridge	0.35	6098
E01017948	Abbey	Cambridge	0.35	6273
E01018147	Huntingdon North	Huntingdonshire	0.34	6436
E01017946	Abbey	Cambridge	0.34	6601
E01018075	Lattersey	Fenland	0.33	6889
E01018145	Huntingdon North	Huntingdonshire	0.33	7017
E01018261	Histon & Impington	South Cambridgeshire	0.32	7059
E01018070	Hill	Fenland	0.32	7097
E01017977	King's Hedges	Cambridge	0.32	7278
E01018078	March East	Fenland	0.32	7286
E01017975	King's Hedges	Cambridge	0.32	7343
E01017943	Abbey	Cambridge	0.32	7390
E01018090	Parsons Drove and Wisbech St Mary	Fenland	0.31	7780

Source : DETR Indices of Deprivation 2004, ODPM

Definition : The percentage of children aged under 16 living in means tested benefit reliant families and the SOA rank compared to the 32,482 in England. The lower the rank the greater the child poverty score

This table shows the twenty super output areas in Cambridgeshire that have the greatest percentage of children living in means tested benefit reliant families. As can be seen 48% of children aged under 16 years in the Super Output Area E01018108 in the ward of Waterless in Fenland live in such families.

- **Income Deprivation Affecting Older People Index (IDOPI), 2004, Top Twenty Super Output Areas in Cambridgeshire 2004**

SOA	Ward	Local Authority	IDOPI Score	National Rank
E01018150	Huntingdon West	Huntingdonshire	0.34	2236
E01018107	Waterlees	Fenland	0.31	3051
E01017979	King's Hedges	Cambridge	0.31	3143
E01017999	Romsey	Cambridge	0.28	4207
E01018100	St Marys	Fenland	0.28	4482
E01017958	Castle	Cambridge	0.28	4508
E01018103	Staithe	Fenland	0.27	4798
E01017948	Abbey	Cambridge	0.25	5898
E01018108	Waterlees	Fenland	0.25	6161
E01017991	Petersfield	Cambridge	0.24	6334
E01018066	Elm & Christchurch	Fenland	0.24	6508
E01018180	St Neots Eaton Socon	Huntingdonshire	0.24	6746
E01017978	King's Hedges	Cambridge	0.23	7150
E01018179	St Neots Eaton Socon	Huntingdonshire	0.22	7489
E01018144	Huntingdon North	Huntingdonshire	0.22	7759
E01018063	Clarkson	Fenland	0.21	8400
E01018135	Gransden and The Offord	Huntingdonshire	0.21	8795
E01017949	Arbury	Cambridge	0.21	8947
E01017946	Arbury	Cambridge	0.20	9163
E01018071	Hill	Fenland	0.20	9289

Source : DETR Indices of Deprivation 2004, ODPM

Definition : The percentage of a SOA's population aged 60 and over who are Income Support/Job Seekers Allowance claimants aged 60 and over and their partners.

This table shows the twenty super output areas in Cambridgeshire that have the greatest percentage of older people claiming benefits. The most deprived SOA in Cambridgeshire is E01018150 in the ward of Huntingdon West with a score of 0.34. This means that 34% of pensioners living in this SOA claim benefits.

- **Housing tenure : Overall Population, 2001**

Local Authority	All People						
	Owned	Shared ownership	Rented from Council	Other social rented :	Private rented	Living rent free	Living in communal Establishment
Cambridge City	46.9%	0.7%	14.9%	4.9%	18.1%	1.8%	12.7%
East Cambridgeshire	73.7%	0.4%	1.2%	11.9%	7.9%	3.6%	1.3%
Fenland	76.0%	0.2%	10.7%	2.2%	7.5%	1.9%	1.5%
Huntingdonshire	76.9%	0.4%	3.9%	8.1%	8.2%	1.5%	1.1%
South Cambridgeshire	75.6%	0.6%	9.9%	3.2%	7.2%	1.7%	1.8%
Cambridgeshire	70.1%	0.5%	8.1%	5.9%	9.8%	1.9%	3.6%

Source : Census 2001 © Crown Copyright 2003

Definition : The housing tenure for all persons

Housing tenure in Cambridge City varies greatly from the other districts, with less than 50% of people living in owned houses. This compares to 70% for the county. In Cambridge City there are high levels of rented housing, particularly private rented, and people living in communal establishments. This reflects the high levels of student accommodation in the city.

• **Housing tenure : Children (aged 0 to 18 years), 2001**

Local Authority	Owns outright	Owns with a mortgage or loan	Shared ownership	Rented from council	Other social rented	Private rented	Living rent free
Cambridge City	10.6%	45.6%	0.8%	23.3%	8.5%	8.9%	2.2%
East Cambridgeshire	10.5%	62.6%	0.4%	1.4%	14.0%	7.3%	3.8%
Fenland	8.8%	62.8%	0.3%	14.1%	3.3%	8.9%	1.7%
Huntingdonshire	8.0%	66.2%	0.4%	5.3%	9.7%	8.8%	1.6%
South Cambridgeshire	11.7%	65.1%	0.5%	10.1%	4.9%	6.3%	1.3%
Cambridgeshire total	9.8%	61.9%	0.5%	10.0%	8.0%	8.0%	1.9%

Source : Census 2001 © Crown Copyright 2003 – Table T01

Definition : The housing tenure for dependent children aged 0 to 18 years

Housing tenure in Cambridge City varies greatly from the other districts, with nearly a quarter of dependent children living in accommodation rented from the council. This compares to just 10% for the county.

• **Housing tenure : Older people (aged over 75 years), 2001**

> 75 years	Pensioner households – living alone or two pensioner households								
	Owned outright or with mortgage or loan		Rented from council or other social rented		Private rented		Rent free		Total
England & Wales		63%		28%		5%		5%	
Cambridge	2,942	57%	1,749	34%	222	4%	241	5%	5,154
East Cambridgeshire	2,265	61%	1,070	29%	146	4%	252	7%	3,733
Fenland	3,298	67%	1,067	22%	239	5%	326	7%	4,930
Huntingdonshire	3,990	65%	1,701	28%	265	4%	221	4%	6,177
South Cambridgeshire	3,855	62%	1,758	28%	189	3%	411	7%	6,213

Source : Census 2001 © Crown Copyright 2003 – Table T06

Definition : The number of pensioner households by type of tenure for both men and women living alone and two person pensioner households for households where both pensioners are aged under 75, and those households where at least one person is aged 75 and over. The housing tenure for a single person or two pensioner households, any aged over 75 years

Fenland has the highest proportion of houses that are owned outright or with a mortgage or loan (67%) by pensioners living alone or in two pensioner households. Cambridge City has the highest proportion of pensioners renting from the council or from other social rented accommodation.

• **Living arrangements : total population, 2001**

Local Authority	All People							Living in a Communal Establishment
	Living in a couple		Not living in a couple					
	Married or re-married	Cohabiting	Single (never married)	Married or re-married	Separated (but still legally married)	Divorced	Widowed	
Cambridge City	29.5%	8.2%	38.5%	0.9%	1.2%	4.4%	4.6%	12.7%
East Cambridgeshire	45.8%	9.1%	32.9%	0.7%	1.1%	3.4%	5.6%	1.3%
Fenland	44.7%	8.7%	32.6%	0.4%	1.5%	4.1%	6.6%	1.5%
Huntingdonshire	45.1%	8.5%	35.1%	0.5%	1.4%	3.7%	4.7%	1.1%
South Cambridgeshire	46.6%	7.6%	34.1%	0.4%	1.2%	3.5%	4.9%	1.8%
Cambridgeshire	42.4%	8.4%	34.9%	0.6%	1.3%	3.8%	5.1%	3.6%

Source : Census 2001 © Crown Copyright 2003

Definition : The living arrangements for all people.

Cambridge City has a noticeable difference in their living arrangements compared to the rest of the county, with a low proportion of married or re-married people, a high proportion of single (never married) people and high proportion of people living in communal establishments. This is likely to reflect the high number of students living in the city.

• **Living arrangements : Children (aged 0-18 years), 2001**

Local Authority	Lone parent family	Non step family	Step family	Not in family
Cambridge City	21%	68%	10%	1%
East Cambridgeshire	12%	75%	12%	0%
Fenland	19%	66%	14%	1%
Huntingdonshire	15%	72%	13%	1%
South Cambridgeshire	12%	78%	10%	0%
Cambridgeshire total	15%	72%	12%	1%

Source : Census 2001 © Crown Copyright 2003 – Table T01

Definition : Family type for dependent children aged 0 to 18 years

Nearly three quarters of families with dependent children are non-step families, with South Cambridgeshire having a higher proportion of such families and Fenland a noticeably lower proportion. Fenland has a higher proportion of lone parent families and step families than the county average. Cambridge City has the highest proportion of lone parent families.

• **Living arrangements : Older people (women 60 and over, men 65 and over), 2001**

Local Authority	Number of people living alone (2001 Census)			% of all People		
	60-74 (F) 65-74 (M)	75-84	85+	60-74 (F) 65-74 (M)	75-84	85+
England & Wales	1,398,360	1,225,820	502,160	32%	42%	49%
Cambridge	2,510	2,290	1,220	36%	43%	55%
East Cambridgeshire	1,640	1,640	740	25%	40%	49%
Fenland	2,270	2,170	890	26%	39%	49%
Huntingdonshire	3,010	2,710	1,120	27%	38%	47%
South Cambridgeshire	2,500	2,570	1,280	25%	39%	51%
Cambridgeshire and Peterborough	15,730	14,610	6,540	28%	40%	51%

Source : Census 2001 © Crown Copyright 2003 – Tables T06

Definition : The number of females over 60 years and males over 65 years living alone.

In general, approximately a half of people aged 85 years and over live alone. This is a noticeably higher in Cambridge City, which has higher rates than seen nationally.

• **Overcrowding : All People, 2001**

Local Authority	Number of People		% of People living in overcrowded households
	Living in overcrowded households	All People	
Cambridge City	11,540	108,863	10.6%
East Cambridgeshire	3,320	73,214	4.5%
Fenland	4,174	83,519	5.0%
Huntingdonshire	6,489	156,954	4.1%
South Cambridgeshire	4,227	130,108	3.2%
Cambridgeshire	29,750	552,658	5.4%

Source : Census 2001 © Crown Copyright 2003 – Table T07

Definiton People living in overcrowded households. Occupancy rating -1 or less. The occupancy rating provides a measure of under-occupancy and

overcrowding in the household. A rating of -1 implies that there is one room too few and that there is overcrowding in the household. The occupancy rating assumes that every household, including one person households, requires a minimum of two common rooms (excluding bathrooms).

The number of people living in overcrowded households varies greatly across the county, with over 1 in 10 living in such conditions in Cambridge City to 1 in 33 in South Cambridgeshire. The national average is 8.7%, so Cambridgeshire as a whole has lower levels of people living in overcrowded households.

• **Overcrowding : Children (aged 0-18 years), 2001**

Local Authority	Number of dependent children		% of dependent children living in overcrowded households
	Living in overcrowded households	Total number	
Cambridge City	1,967	17,754	11.1%
East Cambridgeshire	1,047	15,970	6.6%
Fenland	1,333	17,977	7.4%
Huntingdonshire	2,163	37,986	5.7%
South Cambridgeshire	1,244	29,571	4.2%
Total	7,754	119,258	6.5%

Source : Census 2001 © Crown Copyright 2003 – Table T01

Definiton : Number and proportion of dependent children aged 0 to 18 years living in overcrowded households.

The number of dependent children living in overcrowded households varies greatly across the county, with over 1 in 10 living in such conditions in Cambridge City to 1 in 25 in South Cambridgeshire. Fenland also has a higher proportion of overcrowded households lived in by dependent children than the county average. The national average is 12%, so Cambridgeshire has just over half of the national rate of children living in overcrowded households.

• **Overcrowding : Older people (women 60 and over, men 65 and over), 2001**

Local Authority	All households with people of pensionable age		% of pensioners living in overcrowded households
	Living in overcrowded households	Households with at least one person of pensionable age	
Cambridge City	774	11,924	6.5%
East Cambridgeshire	232	9,640	2.4%
Fenland	384	12,577	3.1%
Huntingdonshire	475	16,955	2.8%
South Cambridgeshire	261	15,519	1.7%
Cambridgeshire	2,126	66,617	3.2%

Source : Census 2001 © Crown Copyright 2003 – Table T06

Definiton : Number of people in households with people of pensionable aged living in overcrowded households and proportion of pensioners living in overcrowded households

The percentage of pensioners living in overcrowded households varies greatly across the county, with over 6% living in such conditions in Cambridge City. The national average is 4.4%, so Cambridgeshire as a whole has a lower rate of overcrowding in pensioner households.

• **No access to a car or van : Total population, 2001**

Local Authority	All Households		
	No cars or vans available	All households	% with no access to car or van
Cambridge City	13,567	42,649	32%
East Cambridgeshire	4,399	29,780	15%
Fenland	6,861	35,194	19%
Huntingdonshire	8,971	63,060	14%
South Cambridgeshire	6,179	52,185	12%
Cambridgeshire	39,977	222,868	18%

Source : Census 2001 © Crown Copyright 2003 –

Definition : Number and proportion of all households living in households with no access to a car or van.

Cambridge City has the highest proportion of households without access to a car or van. This may be less of an issue within such an urban area due to public transport provision and the proximity to services. One in 5 households in Fenland do not have access to a car or a van.

• **No access to a car or van : Children (aged 0 to 18 years), 2001**

Local Authority	Households with dependent children		
	No cars or vans available	All households	% with no access to car or van
Cambridge City	1,629	9,859	17%
East Cambridgeshire	416	8,701	5%
Fenland	968	9,886	10%
Huntingdonshire	1,408	20,471	7%
South Cambridgeshire	485	15,998	3%
Cambridgeshire	4,906	64,915	8%

Source : Census 2001 © Crown Copyright 2003 – Table T01

Definition : Number and proportion of dependent children aged 0 to 18 years living in households with no access to a car or van.

Cambridge City has the highest proportion of households with dependent children without access to a car or van. This may be less of an issue within such an urban area due to public transport provision and the proximity to services. One in 10 households with dependent children in Fenland do not have access to a car or a van.

• **No access to a car or van : Older people (women 60 and over, men 65 and over), 2001**

Local Authority	All Pensioner Households		
	No cars or vans available	All households	% with no access to car or van
Cambridge City	4,905	9,196	53%
East Cambridgeshire	2,968	7,185	41%
Fenland	4,152	9,602	43%
Huntingdonshire	5,018	12,211	41%
South Cambridgeshire	4,151	11,583	36%
Cambridgeshire	21,194	49,777	43%

Source : Census 2001 © Crown Copyright 2003 – Table T01

Definition : Number and proportion of all pensioner households living in households with no access to a car or van.

Cambridge City has the highest proportion of pensioner households without access to a car or van. This may be less of an issue within such an urban area due to public transport provision and the proximity to services.

• **Unemployment : Total population, April 2007**

Local Authority	Male		Female		Total	
	Number	Rate	Number	Rate	Number	Rate
Cambridge	1,034	2.1	373	0.9	1,407	1.5
East Cambridgeshire	408	1.6	208	0.9	616	1.3
Fenland	793	3.0	369	1.5	1,162	2.3
Huntingdonshire	926	1.7	406	0.8	1,332	1.3
South Cambridgeshire	578	1.3	216	0.5	794	0.9
Total	3,739	1.9	1,572	0.9	5,311	1.4

Source : Claimant count, Nomis

Definition : The employment rates based on claimant counts, April 2007.

Fenland has the highest unemployment rate for both sexes and overall population, followed by Cambridge City.

• **Employment of parents aged 16-74 years with dependent children, 2001**

PCT	Both parents working		One parent working		No parents working		Percentage of one parent working - lone parent	Percentage of no parents working - lone parent
	Number	%	Number	%	Number	%		
Cambridge City	9,328	54%	5,852	34%	2,027	12%	22.6%	51.4%
East Cambridgeshire and Fenland	17,318	58%	9,722	33%	2,677	9%	15.0%	50.4%
Huntingdonshire	21,564	63%	10,488	31%	2,137	6%	18.5%	53.8%
South Cambridgeshire	19,594	66%	9,102	30%	1,198	4%	17.1%	54.2%
Cambridgeshire Total	67,804	61%	35,164	32%	8,039	7%	17.8%	52.1%

Source : Census 2001 © Crown Copyright 2003 – Table CAS031

Definition : The employment of parents aged 16-74 years with dependent children aged 0 to 18 years

The working patterns of parents with dependent children differ across the county. Cambridge City and Fenland both have a noticeably higher proportion of no working parents compared to the county average. Cambridge City, however, does have the highest proportion of lone working parents. Approximately half of lone parents do not work, with higher proportions seen in South Cambridgeshire and Huntingdonshire.

• **Average incomes : Total population, 2006**

Local Authority	Households	Average Income
Cambridge City	48,070	£28,500
East Cambridgeshire	33,054	£29,800
Fenland	38,594	£25,300
Huntingdonshire	67,853	£31,600
South Cambridgeshire	56,486	£33,300
Cambridgeshire	244,057	£30,000

Source : CACI Paycheck 2006
http://www.cambridgeshire.gov.uk/business/research/la_bour/houseincome.htm

Definition : Number of households and average income.

South Cambridgeshire has the highest average income at £33,300. Fenland has the lowest average income at £25,300 compared to the Cambridgeshire average income of £30,000.

• **Rural or Urban location, 2004**

Local Authority	Other Urban*	Large Market Town	Rural Town	Total Rural (incl large mkt town)	Village	Dispersed	Total Rural (incl large mkt town)	Total population
Cambridge	108,900 100%	- -	- -	- -	- -	- -	- -	108,900 100%
East Cambridgeshire	- 0%	15,890 22%	32,000 44%	47,890 65%	19,060 26%	6,360 9%	73,310 100%	73,313 100%
Fenland	12,510 15%	43,650 52%	10,670 13%	54,320 65%	12,850 15%	4,030 5%	71,200 85%	83,706 100%
Huntingdonshire	330 -	66,850 43%	56,490 36%	123,340 79%	28,860 18%	4,340 3%	156,540 100%	156,863 100%
South Cambridgeshire	22,660 17%	0 0%	59,150 46%	59,150 46%	42,270 33%	5,850 5%	107,260 83%	129,926 100%
Cambridgeshire	144,390 26%	126,390 23%	158,310 29%	284,690 52%	103,040 19%	20,590 4%	408,310 74%	552,710 100%

Source : DEFRA. * Cambridge City is classified as 'Other Urban' (ie not Large or Major Urban).

Definition : 2001 Census Output Areas (COAs) assigned to the rural definitions in the table. 'Larger market towns' are identified as those urban areas having a set of functional attributes that serve a wider rural hinterland.

Cambridgeshire is predominantly a rural area. The DEFRA classification (2004) reflects the local area relatively well, separating out the large market town population from the village and dispersed populations. The most rural districts are Huntingdonshire and East Cambridgeshire (including the large market towns). Fenland has 52% of its population in large market towns. East Cambridgeshire has 26% in villages and 9% is dispersed amongst the more rural areas.

Note : Totals may not add due to rounding

• **Education : Performance at Key Stage 2, Level 4 or above, 2006**

Local Authority	% of pupils achieving Level 4+		
	English	Maths	Science
Cambridge	77.5	74.6	83.9
East Cambridgeshire	80.3	76.7	88.3
Fenland	75.9	73.6	83.7
Huntingdonshire	83.8	80.3	89.4
South Cambridgeshire	85.8	84.2	92.4
Cambridgeshire	81.5	77.8	88.2

Source : Office of Children and Young People's Services, Cambridgeshire County Council

Definition : Percentage of children aged 11 achieving Key Stage 2 level 4 or above. Level 4 is the expected level of achievement for 11 year olds, 2006.

Cambridge City and Fenland have lower levels of pupils achieving Level 4+ at Key Stage 2 than the county average. East Cambridgeshire is around the county average, Huntingdonshire is slightly above and South Cambridgeshire is noticeably higher.

• **Education : GCSE attainment, 5 or more A*-C, 2006**

Local Authority	Number of pupils achieving 5+ GCSE grades A*-C	% of pupils achieving 5+ GCSE grades A*-C
Cambridge	438	57.8
East Cambridgeshire	486	63.6
Fenland	401	46.7
Huntingdonshire	1,096	60.1
South Cambridgeshire	993	71.0
Cambridgeshire	3,414	61.0

Source : Office of Children and Young People's Services, Cambridgeshire County Council

Definition : Percentage of pupils aged 15 and over who achieved 5 or more GCSE grades A*-C, 2006

Fenland has a noticeably low percentage of pupils attaining 5 or more GCSE grades A*-C, with less than half of such pupils. This compares to over 70% of South Cambridgeshire pupils achieving these grades.

- **Education : Pupils eligible for Free School Meals, January 2007**

Local Authority	Numbers of pupils eligible for free school	% of pupils eligible for free school meals
Cambridge	1,533	13.6
East Cambridgeshire	760	7.2
Fenland	1,641	12.8
Huntingdonshire	1,746	7.1
South Cambridgeshire	917	4.9
Cambridgeshire	6,597	8.5

Source : Office of Children and Young People's Services, Cambridgeshire County Council

Definiton : Percentage of pupils eligible for free school meals. Free school meals are available to children of parents/guardians who are in receipt of income support or income based job seekers allowance or child tax credit or support under part VI of the Immigration & Asylum Act 1999

In January 2007 there were nearly 6,600 pupils eligible for free school meals in Cambridgeshire, with Cambridge City and Fenland having the higher proportions of eligible pupils.

Current known health status of the population of Cambridgeshire

• Teenage conceptions, aged under 16 years, 2002-2004

Local Authority	Average number of conceptions per year	Rate per 1,000	95% CI
England	7,378	7.8	(7.7 - 7.9)
Cambridge	11	7.3	(5.2 - 10.1)
East Cambridgeshire	5	3.3	(1.9 - 5.5)
Fenland	12	7.7	(5.6 - 10.7)
Huntingdonshire	17	5.4	(4.1 - 7.1)
South Cambridgeshire	9	3.5	(2.4 - 5.2)
Cambridgeshire County	54	5.3	(4.5 - 6.1)

Source : Compendium of Clinical and Health Indicators (11/07/07)

Definition : ONS estimates of conceptions in girls aged under 16 years occurring between 2002 and 2004 and the conception rate per 1,000 female population aged 13-15 years

The rates for all the Cambridgeshire Local Authorities are below the England rate with East Cambridgeshire, Huntingdonshire and South Cambridgeshire having statistically significantly low rates. The rates for Cambridge City and Fenland are slightly higher than the rate for the Cambridgeshire County but they do not differ significantly.

• Teenage conceptions, aged under 18 years, 2002-2004

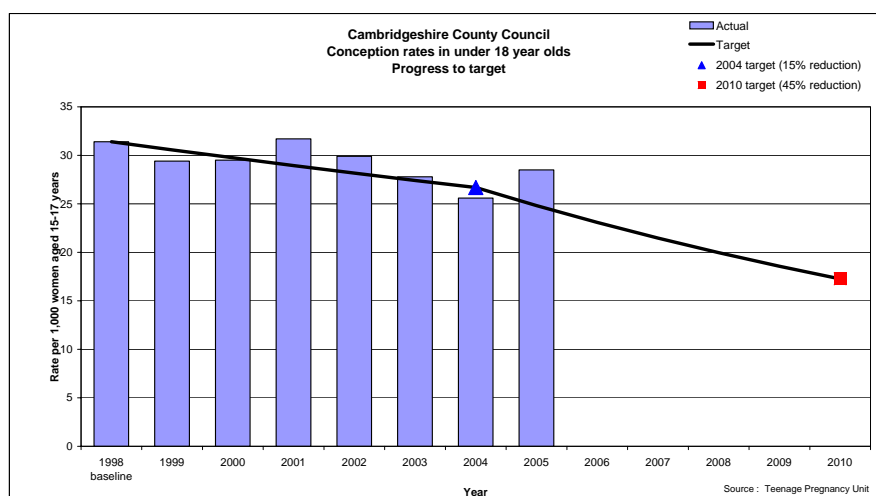
Local Authority	Average number of conceptions per year	Rate per 1,000	95% CI
England	39,499	42.1	(41.8 - 42.3)
Cambridge	53	29.6	(25.4 - 34.5)
East Cambridgeshire	26	18.6	(14.9 - 23.2)
Fenland	67	44.0	(38.4 - 50.3)
Huntingdonshire	89	29.9	(26.6 - 33.6)
South Cambridgeshire	44	18.3	(15.4 - 21.6)
Cambridgeshire County	279	27.7	(25.9 - 29.6)

Source : Compendium of Clinical and Health Indicators (11/07/07)

Definition : ONS estimates of conceptions in girls aged under 18 years occurring between 2002-2004, the conception rate per 1,000 female population aged 15-17 years

The overall Cambridgeshire County Council has a rate that is statistically significantly lower than the England rate. Fenland has a rate that is statistically significantly higher than the Cambridgeshire average, but it does not differ significantly from the national rate. The remaining Local Authorities in Cambridgeshire have rates that are statistically significantly lower than England and Wales.

• Progress towards local teenage conception target, under 18 year olds



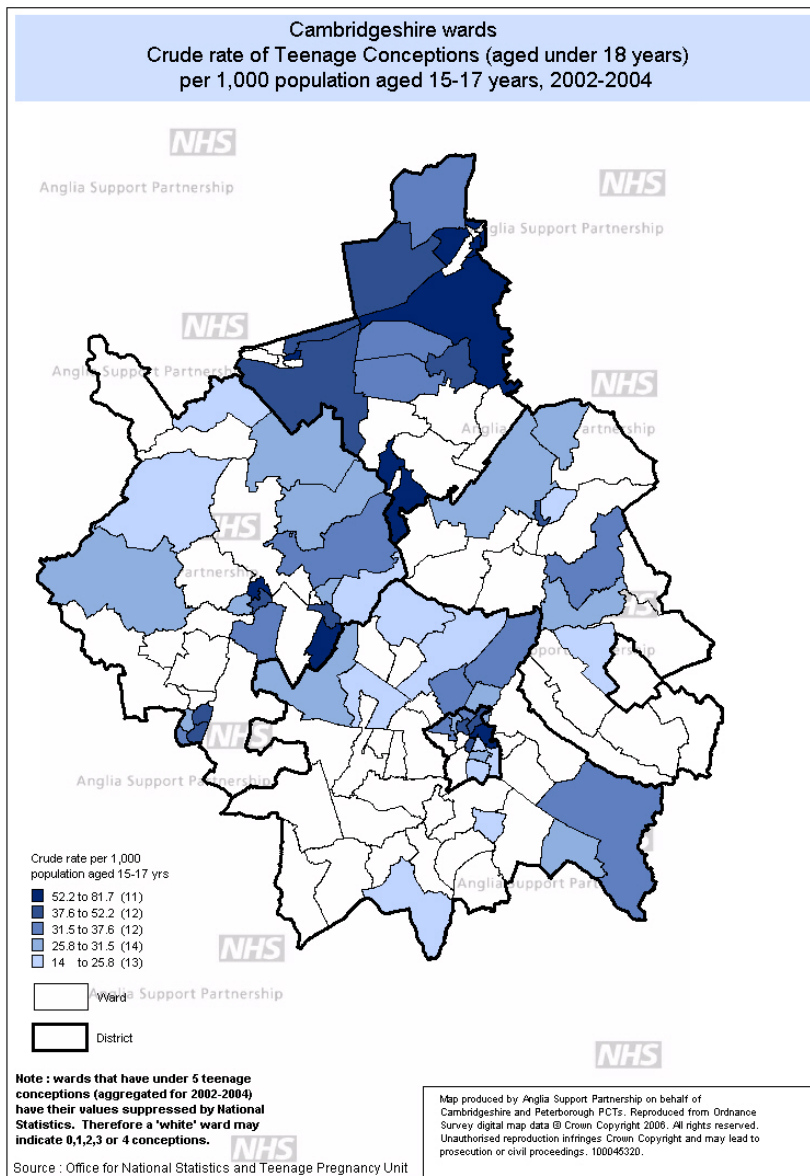
Target : A 45% reduction in conceptions in girls aged under 18 years in Cambridgeshire County Council by 2010 with a 15% decrease by 2004

Source: Teenage Pregnancy Unit

Definition : Rate of conceptions in girls aged under 18 years in Cambridgeshire and progress towards target

In 2004 the county council were on line to meet this target but due to the increase in the rate in 2005 this is no longer the case.

- **Crude rate of Teenage Conceptions aged under 18 years, 2002-2004**



Source: Office for National Statistics & Teenage Pregnancy Unit and Census 2001

Definition : Crude rate of teenage conceptions (aged under 18 years) per 1,000 population aged 15-17 years, 2002-2004. Population based on 2001 census

Note: It is important to note that the wards that have under 5 teenage conceptions (aggregated for 2002- 2004) have their values suppressed by National Statistics. Therefore a 'white' ward may indicate 0,1,2,3 or 4 conceptions

It is apparent that Fenland has the highest rates of teenage conceptions in Cambridgeshire. The wards with the highest rates per 1,000 female population aged 15-17 years are :

Waterlees	Fenland	81.7 per 1,000 population
Slade Lode	Fenland	80.5 per 1,000 population
Wenney Hill	Fenland	79.4 per 1,000 population
Huntingdon North	Huntingdon	71.4 per 1,000 population
Staithe	Fenland	71.4 per 1,000 population

• **Births : General Fertility Rates, Aged 11-49 years, 2005**

Local Authority	Rate/ 1,000	95% CI
England and Wales	58.4	(58.3 - 58.5)
Cambridge	35.0	(33.1 - 37.1)
East Cambridgeshire	62.3	(58.6 - 66.2)
Fenland	58.5	(54.9 - 62.3)
Huntingdonshire	57.5	(55.1 - 60.1)
South Cambridgeshire	58.7	(56.0 - 61.6)
Cambridgeshire	52.4	(51.1 - 53.6)

Source: Compendium of Clinical and Health Indicators 2007 based on ONS 05_V2 birth tables

Definition: The number of live births to mothers resident in an area aged 11-49 years per 1,000 women aged 15-44 years resident in the area, 2005

The rates vary widely across Cambridgeshire with statistically significantly low rates in Cambridge City compared to England and Wales. The low rate in Cambridge City is likely to be attributable to the high number of resident students. East Cambridgeshire has a statistically significantly high rate compared to England and Wales. Cambridgeshire County has statistically significantly lower fertility rate compared to England and Wales.

• **Births : Low birth weight, 2005**

Local Authority	Under 1,500 grams			Under 2,500 grams		
	Number	%	95% CI	Number	%	95% CI
England and Wales	9,575	1.5	(1.5 - 1.5)	51,046	7.9	(7.8 - 8.0)
Cambridge	15	1.3	(0.8 - 2.1)	109	9.1	(7.6 - 10.9)
East Cambridgeshire	12	1.2	(0.7 - 2.2)	57	5.9	(4.6 - 7.6)
Fenland	3	0.3	(0.1 - 1.0)	69	7.5	(6.0 - 9.4)
Huntingdonshire	25	1.3	(0.9 - 2.0)	138	7.4	(6.3 - 8.7)
South Cambridgeshire	18	1.1	(0.7 - 1.8)	92	5.8	(4.7 - 7.1)
Cambridgeshire	73	1.1	(0.9 - 1.4)	465	7.1	(6.5 - 7.8)

Source: Compendium of Clinical and Health Indicators 2007 based on ONS 05_VS2 birth tables

Definition: Number of live and stillbirths with birth weights under 1,500 grams and under 2,500 grams for all maternal ages as a percentage of all live and still births (where a birth weight is stated)

Cambridgeshire on a whole has a statistically significantly lower rate of babies born weighing less than 1,500 grams compared to England and Wales. Cambridge City and Huntingdonshire have the highest rates of babies born weighing less than 1,500 grams within Cambridgeshire but these do not differ significantly. Fenland has a statistically significantly low rate of babies born weighing less than 1,500 grams compared to England and Wales. Cambridge City has a rate that is higher than the England and Wales rates for babies born weighing less than 2,500 grams but again this does not differ significantly. South Cambridgeshire and East Cambridgeshire have statistically significantly low rates for babies born weighing less than 2,500 grams when compared to England and Wales.

• **Births : Stillbirths, 2003-2005**

Local Authority	Average annual deaths	Rate/1,000 total births	95% CI
England and Wales	3,569	5.6	(5.5 - 5.7)
Cambridge City	5	4.3	(2.6 - 7.2)
East Cambridgeshire	4	4.7	(2.7 - 8.1)
Fenland	3	3.0	(1.5 - 5.9)
Huntingdonshire	7	3.6	(2.3 - 5.6)
South Cambridgeshire	5	3.2	(1.9 - 5.3)
Cambridgeshire	24	3.7	(2.9 - 4.7)

Source: Compendium of Clinical and Health Indicators 2007 based on ONS 05_VS2 birth tables

Definition: The number of stillbirths for all maternal ages and rate per 1,000 total births

The number of stillbirths per year are small and therefore prone to annual fluctuations. The rates for all of the Local Authorities are below the England and Wales rate with South Cambridgeshire and Cambridgeshire having a statistically significantly lower rate.

• **Mortality : Infant Mortality, 2003-2005**

Local Authority	Average annual deaths	Rate/1,000 live births	95% CI
England and Wales	3,242	5.1	(5.0 - 5.2)
Cambridge City	7	6.4	(4.2 - 9.7)
East Cambridgeshire	-	3.6	(2.0 - 6.7)
Fenland	-	3.4	(1.8 - 6.5)
Huntingdonshire	9	4.9	(3.4 - 7.2)
South Cambridgeshire	-	2.6	(1.5 - 4.6)
Cambridgeshire	27	4.2	(3.4 - 5.2)

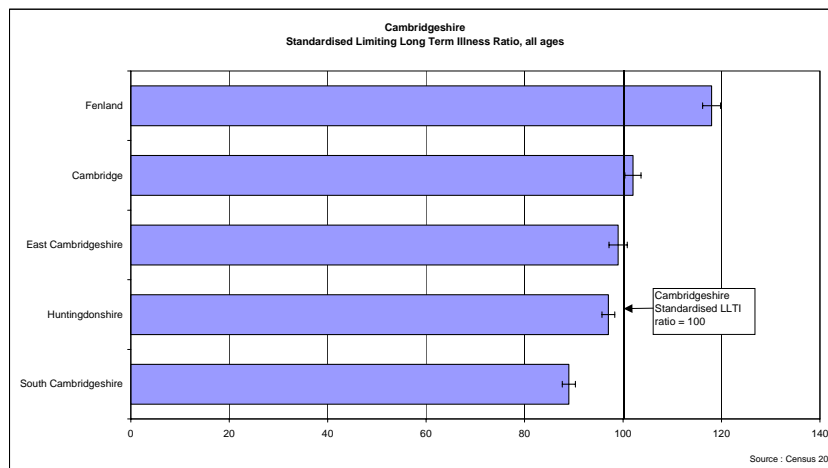
Source: Compendium of Clinical and Health Indicators 2007 based on ONS 05_VS2 birth tables

Definition: Number of deaths of infants at aged under 1 year and rate per 1,000 live births.

There are on average 27 infant deaths a year in Cambridgeshire. Cambridge City had the highest infant mortality rate for the time period 2003 to 2005, but it did not differ significantly to the county or England & Wales averages. South Cambridgeshire has a rate that is statistically significantly lower than England and Wales. The numbers are small and prone to annual fluctuations.

Note : '-' denotes where there are 5 or less deaths

• **Standardised Limiting Long Term Illness Ratio : Total population, 2001**

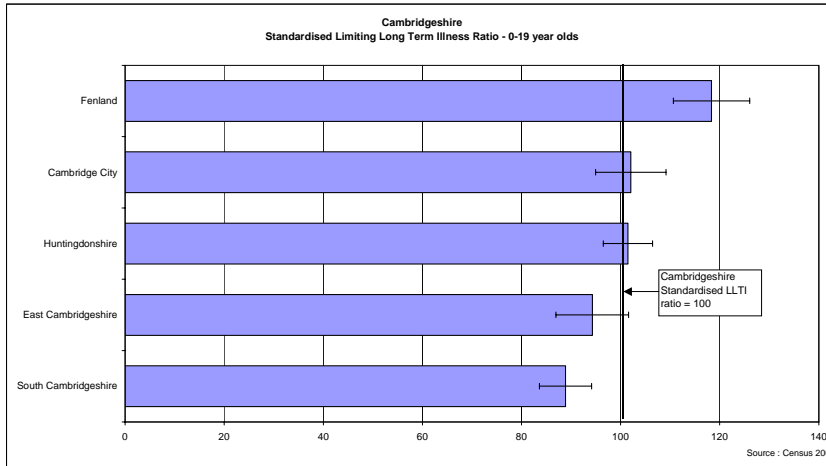


Source: Census 2001 © Crown Copyright 2003 and Cambridgeshire County Council Research Group

Definition: This ratio compares the actual number of people with LLTI in a district to the number that would be expected for that district given their population size and age structure (based on the overall Cambridgeshire rate). A ratio of over 100 indicates more people with LLTI than would be expected.

Fenland and Cambridge City have significantly high ratios, indicating that there are more people with a limiting long term illness than would be expected given their population size and structure. Huntingdonshire and South Cambridgeshire have statistically significantly low ratios.

- **Standardised Limiting Long Term Illness Ratio : Children aged 0-19 years, 2001**

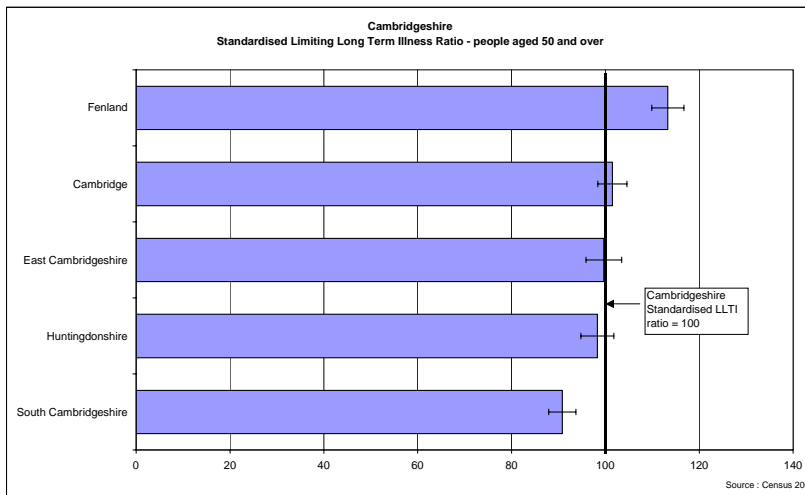


Source: Census 2001 © Crown Copyright 2003 and Cambridgeshire County Council Research Group

Definition: This ratio compares the actual number of children with LLTI in a district to the number that would be expected for that district given their population size and age structure (based on the overall Cambridgeshire rate). A ratio of over 100 indicates more children with LLTI than would be expected.

Fenland has a statistically significantly high Standardised Limiting Long Term Illness (LLTI) ratio indicating that the district has a higher number of children with LLTI than would be expected given their population size and structure. South Cambridgeshire has a statistically significantly low ratio compared to the Cambridgeshire average.

- **Standardised Limiting Long Term Illness Ratio : Older people aged 50+ years, 2001**



Source: Census 2001 © Crown Copyright 2003 and Cambridgeshire County Council Research Group

Definition: This ratio compares the actual number of older people with LLTI in a district to the number that would be expected for that district given their population size and age structure (based on the overall Cambridgeshire rate). A ratio of over 100 indicates more older people with LLTI than would be expected.

Fenland has a statistically significantly high Standardised Limiting Long Term Illness (LLTI) ratio indicating that the district has a higher number of older people aged 50+ years with LLTI than would be expected given their population size and structure. South Cambridgeshire has a statistically significantly low ratio compared to the Cambridgeshire average.

- **Estimated number of people with disability (frailty), 2006**

LA	Number frail over 65			Number frail over 85		
	Men	Women	Persons	Men	Women	Persons
Cambridge	690	1,700	2,390	210	820	690
East Cambridgeshire	670	1,300	1,970	190	520	670
Fenland	880	1,770	2,650	230	680	880
Huntingdonshire	1,080	2,400	3,490	290	1,020	1,080
South Cambridgeshire	1,130	2,330	3,460	360	1,030	1,130
Cambridgeshire	4,460	9,500	13,950	1,290	4,060	4,460

Source : Cognitive Function and Ageing Study (CFAS) estimates and CCCRG population estimates (2006). Totals may not add due to rounding.

Definition : CFAS study estimates of frailty applied to resident population estimates (CCC) for 2006.

As a result of the CFAS research (see www-cfas.medschl.cam.ac.uk) 11% of men studied and 19% of women aged 65 and over were disabled. Applied to the local population, this suggests that nearly 14,000 people over 65 years are frail of whom nearly 4,500 are over 85 years of age.

- **Estimated number of people with disability (frailty) by type, 2006**

LA	Number frail aged over 65 years			
	Physically frail	Mentally frail	Combined mental and physical frailty	Total frail
Cambridge	1,470	450	450	2,390
East Cambridgeshire	1,210	390	360	1,970
Fenland	1,650	520	480	2,650
Huntingdonshire	2,170	670	630	3,490
South Cambridgeshire	2,130	670	650	3,460
Cambridgeshire	8,620	2,700	2,570	13,950

Source : Cognitive Function and Ageing Study estimates and CCC Research Group 2006 population estimates. Totals may not add due to rounding

Definition : CFAS study estimates of frailty applied to resident population for 2006.

As a result of the CFAS research (see www-cfas.medschl.cam.ac.uk) 62% of those who were identified as 'frail' were physically frail, 20% were mentally frail and 18% had both mental and physical frailty combined.

- **Estimated number of people with Dementia, 2006**

LA	65-74	75-84	85+	Total with dementia	% population aged 65+
Cambridge City	100	400	600	1,100	8.3%
East Cambridgeshire	100	400	400	900	7.3%
Fenland	200	500	500	1,200	7.1%
Huntingdonshire	200	600	700	1,600	7.2%
South Cambridgeshire	200	600	800	1,600	7.7%
Cambridgeshire	900	2,600	3,000	6,600	7.5%

Source : Dementia UK estimates (2007) and CCCRG population estimates (2006). Totals may not add due to rounding.

Definition : Dementia UK estimates (2007) applied to resident population estimates (CCC) for 2006.

The prevalence of dementia rises considerably with age particularly among women. Prevalence estimates suggest that, in 2006, there are around 6,600 older people with dementia in Cambridgeshire.

- **Estimated number of new cases of Dementia, 2006**

LA	65-74	75-84	85+	Total new cases dementia	% population aged 65+
Cambridge City	100	100	100	300	2.1%
East Cambridgeshire	100	100	100	200	1.9%
Fenland	100	100	100	300	1.9%
Huntingdonshire	100	100	200	400	1.9%
South Cambridgeshire	100	100	200	400	2.0%
Cambridgeshire	400	600	700	1,700	2.0%

Source : Matthews et al. The incidence of dementia in England and Wales: findings from the five identical sites of the MRC CFA study. PLoS Medicine 2005 2: e193. Totals may not add due to rounding.

Definition : Dementia incidence estimates applied to resident population estimates (CCC) for 2006.

The incidence of dementia rises considerably with age particularly among women. Incidence estimates suggest that, in 2006, there would have been around 1,700 new cases of dementia.

- **Mortality : All cause mortality, 2003-2005**

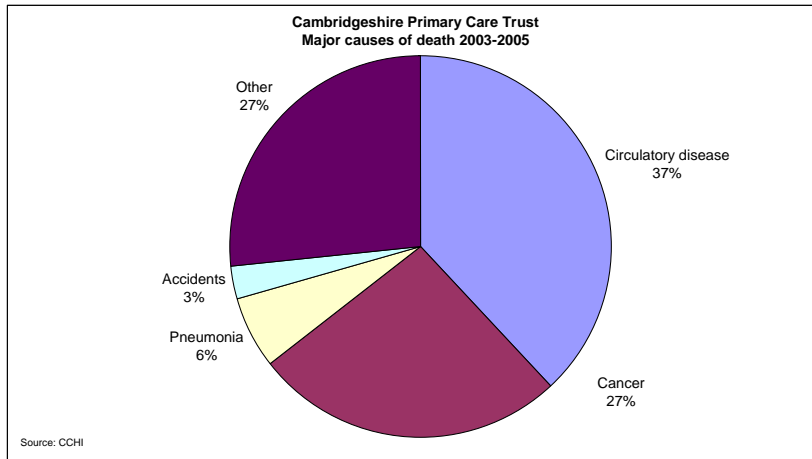
Local Authority	Average annual deaths	Rate/ 100,000	95% CI
England & Wales	520,937	635.7	(635 - 637)
Cambridge	888	581.0	(558 - 605)
East Cambridgeshire	684	542.4	(518 - 567)
Fenland	1,038	658.6	(634 - 683)
Huntingdonshire	1,244	573.4	(555 - 592)
South Cambridgeshire	1,054	507.1	(489 - 525)
Cambridgeshire County	4,907	567.5	(558 - 577)

Source : Compendium of Clinical and Health Indicators – downloaded December 2006

Definition : Deaths from all causes (ICD10 A00-Y99) and the directly age standardised rate per 100,000 total population with 95% confidence intervals

The levels of overall mortality varies across Cambridgeshire local authorities, with Fenland having a statistically significantly higher rate than the Cambridgeshire average. The other districts have statistically significantly low rates compared to England and Wales, as does Cambridgeshire as a whole.

• **Mortality : Main causes of death, Total population, 2003-2005**

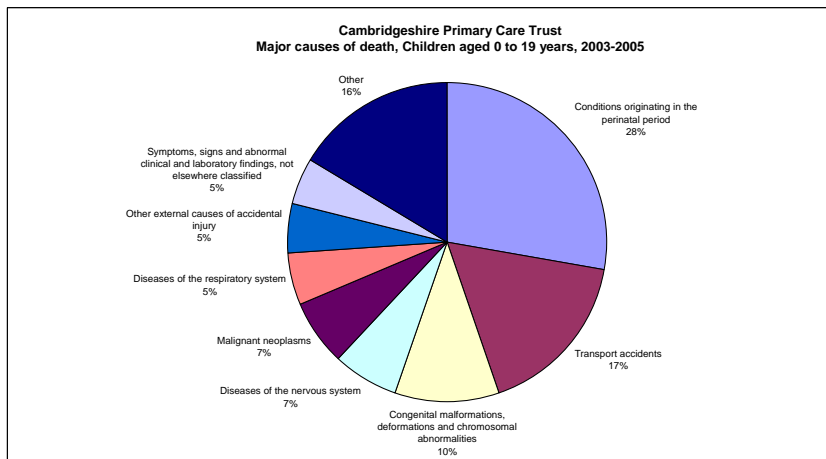


Source :
Compendium of Clinical and Health Indicators 2003-05 (Pooled) based on ONS mortality data.

Definition :
Number of deaths by disease as a percentage of the total number of deaths for 2003-2005 in people aged 1 and over

Deaths from circulatory disease and cancer contribute to 64% of all deaths in Cambridgeshire PCT.

• **Mortality : Main causes of death, Children 0 to 19 years , 2003-2005**

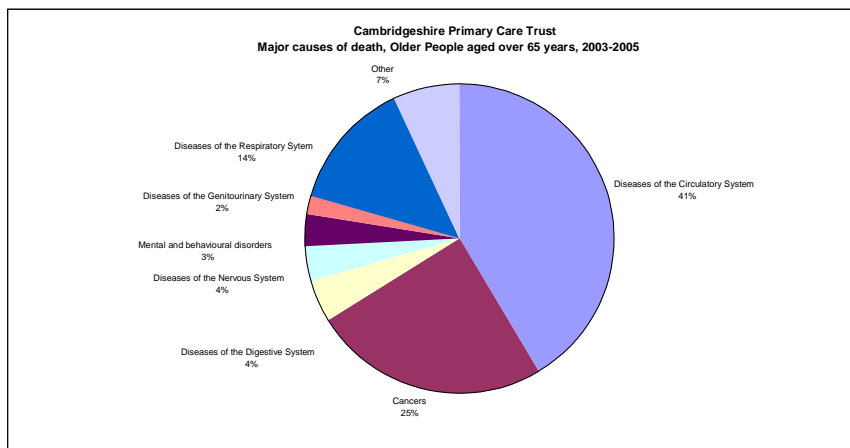


Source :
Annual extract of deaths, Vital Statistics, ONS

Definition :
Number of deaths by disease as a percentage of the total number of deaths for 2003-2005, children aged 0 to 19 years.

The main causes of death for children aged 0 to 19 years are for conditions originating in the perinatal period and transport accidents.

• **Mortality : Main causes of death, people aged over 65 years, 2003-2005**



Source :
Compendium of Clinical and Health Indicators 2003-05 (Pooled) based on ONS mortality data.

Definition :
Number of deaths by disease as a percentage of the total number of deaths for 2003-2005 in older people over 65.

Deaths from circulatory disease and cancer contribute to 66% of all deaths in people aged over 65 years.

- **Mortality : Circulatory disease, all ages, 2003-2005**

Local Authority	Average annual deaths	Rate/ 100,000	95% CI
England & Wales	192,867	221.5	(221 - 222)
Cambridge	332	194.9	(182 - 208)
East Cambridgeshire	268	198.1	(184 - 212)
Fenland	415	243.2	(229 - 257)
Huntingdonshire	443	192.2	(182 - 203)
South Cambridgeshire	408	182.4	(172 - 193)
Cambridgeshire County	1,865	201.0	(196 - 206)

Source: Compendium of Clinical and Health Indicators – downloaded December 2006

Definition: Deaths from all circulatory disease (ICD10 I00-I99) and directly age-standardised rate per 100,000 total population

Fenland has a rate that is 9.8 % higher than the England and Wales rate and is statistically significantly high compared to England and Wales, the Cambridgeshire County and all the other local authorities in Cambridgeshire. Cambridgeshire County and the other local authorities have rates that are statistically significantly lower than the England and Wales rate.

- **Mortality : Circulatory disease, under 75 years, 2003-2005**

Local Authority	Average annual deaths	Rate/ 100,000	95% CI
England & Wales	52,123	91.2	(91 - 92)
Cambridge	53	58.7	(49 - 68)
East Cambridgeshire	58	66.0	(56 - 76)
Fenland	108	96.0	(85 - 107)
Huntingdonshire	112	67.5	(60 - 75)
South Cambridgeshire	83	57.9	(51 - 65)
Cambridgeshire County	414	68.9	(65 - 73)

Source: Compendium of Clinical and Health Indicators – downloaded December 2006

Definition : Deaths from all circulatory disease (ICD10 I00-I99) in people aged under 75 years and directly age-standardised rate per 100,000 population aged under 75 years

All the local authorities within Cambridgeshire, apart from Fenland, have statistically significantly low rates compared to England and Wales. Fenland has a rate that is statistically significantly higher than the Cambridgeshire average and all the other Cambridgeshire local authorities, but it does not differ significantly from the England and Wales rate.

- **Mortality : Coronary heart disease, under 75 years, 2003-2005**

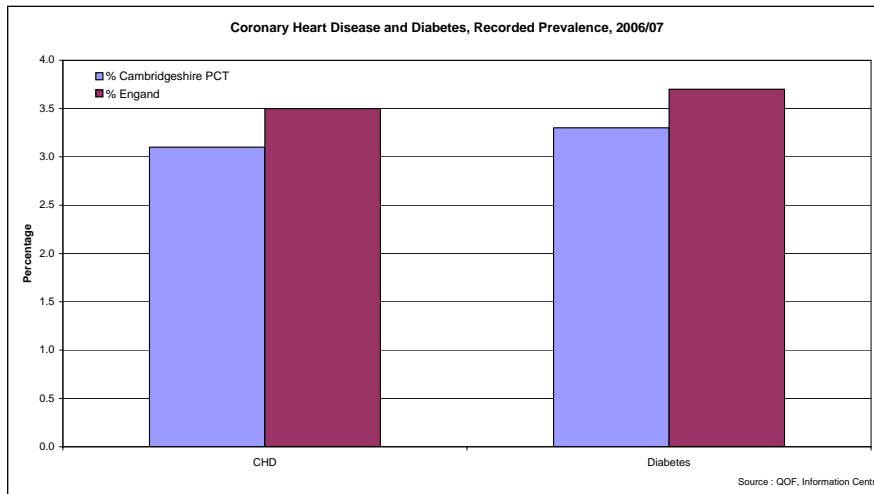
Local Authority	Average annual deaths	Rate/ 100,000	95% CI
England & Wales	30,250	53.0	(53 - 53)
Cambridge	30	34.7	(28 - 42)
East Cambridgeshire	37	42.5	(35 - 50)
Fenland	66	59.1	(51 - 67)
Huntingdonshire	61	37.2	(32 - 43)
South Cambridgeshire	49	34.5	(29 - 40)
Cambridgeshire County	245	41.0	(38 - 44)

Source: Compendium of Clinical and Health Indicators – downloaded December 2006

Definition : Deaths from Coronary Heart Disease (ICD10 I20-I25) in people aged under 75 and the directly age-standardised rate per 100,000 population aged under 75 years

Cambridgeshire County has a statistically significantly low rate of mortality from Coronary Heart Disease in people aged under 75 years compared to England and Wales. Fenland has a high rate but it does not differ significantly compared to England and Wales. All the other local authorities within Cambridgeshire have got statistically significantly lower rates compared to England and Wales.

• **Coronary Heart Disease and Diabetes, Recorded Prevalence, 2006/07**



Source : QMAS, data extracted from GP practices, Summary data from Information Centre.

Definition : The % prevalence of diabetes as recorded on GP Practice systems in the PCT, 2006/07.

It appears, from recorded prevalence from GP practices, that Cambridgeshire has a lower prevalence rate of coronary heart disease and diabetes than the England average.

Data quality at practice level has vastly improved since the start of the PRIMIS project, however, it is still not known if the quality is accurate enough to provide the actual population prevalence of diabetes. The data shown is the recorded prevalence of people registered with a GP practice who have a Read-coded diagnosis recorded on the practice clinical system.

• **Mortality : Stroke, under 75 years, 2003-2005**

Local Authority	Average annual deaths	Rate/ 100,000	95% CI
England & Wales	10,074	17.5	(17 - 18)
Cambridge	10	11.3	(7 - 15)
East Cambridgeshire	10	11.2	(7 - 15)
Fenland	17	14.6	(10 - 19)
Huntingdonshire	20	11.8	(9 - 15)
South Cambridgeshire	13	9.1	(6 - 12)
Cambridgeshire County	70	11.43	(10 - 13)

Source: Compendium of Clinical and Health Indicators – downloaded December 2006 based on ONS mortality data

Definition : Deaths from Stroke (ICD10 I60-I69) in people under 75 years and directly age-standardised rate per 100,000 population

All of the local authorities within Cambridgeshire have a low stroke mortality rate in people aged under 75 years compared to England and Wales with Cambridge City, South Cambridgeshire, East Cambridgeshire and Huntingdonshire having a statistically significantly low rate. The numbers of deaths are relatively low and the confidence intervals are wide at the local authority level.

• **Mortality : Cancer, all ages, 2003-2005**

Local Authority	Average annual deaths	Rate/ 100,000	95% CI
England & Wales	134,961	180.2	(180 - 181)
Cambridge	209	160.0	(147 - 173)
East Cambridgeshire	189	159.7	(146 - 173)
Fenland	249	169.2	(156 - 182)
Huntingdonshire	353	174.5	(164 - 185)
South Cambridgeshire	302	159.1	(148 - 170)
Cambridgeshire County	1,302	165.2	(160 - 171)

Source: Compendium of Clinical and Health Indicators – downloaded December 2006 based on ONS mortality data

Definition : Deaths from all malignant neoplasms (ICD10 C00-C97) of people all ages and the directly age standardised rate per 100,000 population

Cambridgeshire has an all age cancer mortality rate that is statistically significantly low compared to England and Wales, as do South Cambridgeshire, East Cambridgeshire and Cambridge City.

• **Mortality : Cancer, under 75 years, 2003-2005**

Local Authority	Average annual deaths	Rate/ 100,000	95% CI
England & Wales	66,969	119.3	(119 - 120)
Cambridge	95	105.2	(93 - 117)
East Cambridgeshire	80	92.0	(80 - 104)
Fenland	118	108.7	(97 - 120)
Huntingdonshire	194	117.9	(108 - 127)
South Cambridgeshire	141	98.3	(89 - 108)
Cambridgeshire County	628	105.5	(101 - 110)

Source: Compendium of Clinical and Health Indicators – downloaded December 2006 based on ONS mortality data

Definition : Deaths from all malignant neoplasms (ICD10 C00-C97) of people aged under 75 and the directly age standardised rate per 100,000 population aged under 75

The mortality rates from all cancers in people aged under 75 years vary across Cambridgeshire County. Huntingdonshire has noticeably the highest rate in Cambridgeshire and is similar to the national average, but the rate does not differ significantly. East Cambridgeshire, South Cambridgeshire, Cambridge City and Cambridgeshire County have statistically significantly low rates compared to England and Wales.

• **Mortality : Breast cancer, 50-69 years, 2003-2005**

Local Authority	Average annual deaths	Rate/ 100,000	95% CI
England & Wales	3,784	62.0	(61 - 63)
Cambridge	5	48.2	(23 - 74)
East Cambridgeshire	6	59.2	(31 - 87)
Fenland	9	81.2	(50 - 112)
Huntingdonshire	12	61.8	(41 - 82)
South Cambridgeshire	9	56.1	(35 - 77)
Cambridgeshire County	40	61.1	(50 - 72)

Source: Compendium of Clinical and Health Indicators – downloaded December 2006 based on ONS mortality data

Definition : Deaths from breast cancer (ICD10 C50) in women aged 50–69 years and directly age-standardised rate per 100,000 female population aged 50-69 years

The average annual deaths from breast cancer in women aged 50-69 years for all the local authorities, apart from Fenland, have lower rates compared to England and Wales but do not differ significantly. Fenland does have a high rate compared to Cambridgeshire County and England and Wales but it does not differ significantly. The numbers of deaths are relatively low and the confidence intervals are wide at the local authority level.

• **Screening : Breast cancer, 53-64 years, 2003 - 2006**

	2003	2004	2005	2006
England	75%	75%	-	76%
Cambridge City	73%	73%	74%	75%
East Cambridgeshire & Fenland	77%	81%	81%	81%
Huntingdonshire	81%	82%	82%	82%
South Cambridgeshire	79%	80%	81%	82%

Source : KC63. Information Centre for Health and Social Care

Definition : Breast screening programme : coverage (less than three years since last test) of women aged 53-64 by Primary Care Organisation at 31 March of each year 2003 – 2006. Women aged 53-64 screened for breast cancer as a percentage of the total number of women eligible for screening

In 2006 all of the former PCT's, with the exception of Cambridge City, had noticeably higher breast screening rates than seen nationally. Cambridge City has a breast screening rate that is just below the national average.

• **Registrations : Cervical cancer, all ages, 2001-2003**

Local Authority	Average annual registrations	Rate/ 100,000	95% CI
England & Wales	2,533	8.4	(8 - 9)
Cambridge	-	4.5	(1 - 8)
East Cambridgeshire	-	4.5	(1 - 8)
Fenland	-	8.3	(3 - 13)
Huntingdonshire	-	4.1	(2 - 7)
South Cambridgeshire	6	9.2	(5 - 13)
Cambridgeshire County	-	-	-

Source : Compendium of Clinical and Health Indicators 2006 based on data from the Regional Cancer Registries and ONS

Definition : Cancer registrations for cervical cancer (CD10 C53) in women of all ages and the directly age-standardised registration rate per 100,000 female population

Note : '-' denotes where there less than 6 registrations

The registration rates for cervical cancer noticeably differ across Cambridgeshire Local Authorities with Huntingdonshire having a statistically significantly low rate compared to England and Wales. None of the Local Authorities have statistically significantly high rates and the numbers of annual registrations are very small. There are no Cambridgeshire County data available for this period.

• **Screening : Cervical cancer , 25-64 years, 2001/02 – 2005/06**

PCT	Coverage women aged 25-64 years Less than 5 years since last adequate test				
	2001/02	2002/03	2003/04	2004/05	2005/06
England	81.60%	81.20%	80.60%	80.30%	79.50%
Huntingdonshire	86.3%	85.9%	85.2%	84.7%	85.1%
South Cambridgeshire	86.7%	86.2%	85.2%	84.9%	85.3%
East Cambridgeshire & Fenland	84.2%	84.0%	83.3%	82.9%	82.9%
Cambridge City	81.5%	80.3%	79.0%	77.3%	75.6%

Source : KC53 cervical screening return. Information Centre for Health and Social Care.

Definition : Number of women aged 25-64 years screened for cervical abnormalities in the last five years as a percentage of the total number of women eligible for screening.

Coverage figures for Cambridgeshire are above the national target figure of 80% with the exception of Cambridge City PCT. Cambridge City has not achieved 80% coverage since 2002/03 and the decline has continued.

• **Mortality : Prostate cancer, all ages, 2003-2005**

Local Authority	Average annual deaths	SMR	95% CI
England	8,531	100	(99 - 102)
Cambridge	16	97	(71 - 128)
East Cambridgeshire	15	104	(76 - 139)
Fenland	17	94	(70 - 124)
Huntingdonshire	21	88	(67 - 112)
South Cambridgeshire	29	124	(100 - 154)
Cambridgeshire County	97	102	(90 - 114)

Source : Compendium of Clinical and Health Indicators 2006 based on ONS mortality data

Definition : Mortality from prostate cancer (ICD10 C61) for men all ages, Standardised Mortality Ratio (SMR) and 95% Confidence Intervals.

South Cambridgeshire has a prostate cancer standardised mortality ratio that is 24% higher than the national average, but this does not differ significantly.

• **Mortality : Lung cancer, males, under 75 years, 2003-2005**

Local Authority	Average annual deaths	Rate/ 100,000	95% CI
England and Wales	9,294	33.9	(34 - 34)
Cambridge	15	35.8	(25 - 46)
East Cambridgeshire	10	22.8	(14 - 31)
Fenland	19	34.0	(25 - 43)
Huntingdonshire	28	34.0	(27 - 41)
South Cambridgeshire	14	19.5	(14 - 25)
Cambridgeshire County	86	29.1	(26 - 33)

Source : Compendium of Clinical and Health Indicators 2006 based on ONS mortality data

Definition : Deaths from lung cancer (ICD10 C33-C34) in men aged under 75 years and the directly age-standardised rate per 100,000 male population aged under 75 years

South Cambridgeshire, East Cambridgeshire and Cambridgeshire County have a rate that is statistically significantly lower than the rate for England and Wales. Fenland and Cambridge City have a higher rate compared to England and Wales but those do not differ significantly.

• **Mortality : Lung cancer, females, under 75 years, 2003-2005**

Local Authority	Average annual deaths	Rate/ 100,000	95% CI
England and Wales	5,944	20.3	(20 - 21)
Cambridge	5	9.8	(5 - 15)
East Cambridgeshire	5	10.7	(5 - 16)
Fenland	11	19.3	(13 - 26)
Huntingdonshire	19	22.7	(17 - 29)
South Cambridgeshire	6	8.7	(5 - 13)
Cambridgeshire County	46	15.0	(12 - 18)

Source : Compendium of Clinical and Health Indicators 2006 based on ONS mortality data

Definition : Deaths from lung cancer (ICD10 C33-C34) in women aged under 75 years and the directly age-standardised rate per 100,000 female population aged under 75 years

The rate of lung cancer mortality in women aged under 75 years noticeably varies across the county. South Cambridgeshire, Cambridge City, East Cambridgeshire and Cambridgeshire County have a statistically significantly low rate compared to England and Wales. No Local authority has a rate that is statistically significantly high. The number of deaths at Local Authority level is relatively small and therefore confidence intervals are wide.

• **Mortality : Accidents, all ages, 2003-2005**

Local Authority	Average annual deaths	Rate/ 100,000	95% CI
England & Wales	11,257	16.2	(16 - 16)
Cambridge	25	17.1	(13 - 21)
East Cambridgeshire	20	22.1	(16 - 28)
Fenland	25	22.6	(17 - 28)
Huntingdonshire	36	19.5	(16 - 23)
South Cambridgeshire	27	15.9	(12 - 20)
Cambridgeshire County	132	18.0	(16 - 20)

Source: Compendium of Clinical and Health Indicators 2006 based on ONS mortality data

Definition : Deaths from accidents (ICD9 E800-E928 exc E870-E879, ICD10 V01-X59) in people of all ages and directly age-standardised rate per 100,000 total population

Cambridgeshire as a whole and all districts, other than South Cambridgeshire, have a higher rate of accidental deaths than England & Wales. Fenland has a statistically significantly high rate.

• **Mortality : Accidents, 15-24 years, 2003-2005**

Local Authority	Average annual deaths	Rate/ 100,000	95% CI
England & Wales	1,018	15.0	(14 - 15)
Cambridge	-	3.5	(0 - 8)
East Cambridgeshire	-	33.8	(10 - 57)
Fenland	-	39.4	(16 - 63)
Huntingdonshire	5	24.8	(12 - 38)
South Cambridgeshire	-	30.0	(13 - 47)
Cambridgeshire County	16	20.2	(14 - 26)

Source: Compendium of Clinical and Health Indicators 2006 based on ONS mortality data

Definition: Deaths from accidents (ICD10 V01-X5) in people aged 15-24 years and directly age-standardised rate per 100,000 population aged 15-24 years

Fenland has a rate that is statistically significantly higher than the England and Wales rate. Cambridge City has a statistically significantly lower Cambridgeshire County and England and Wales. It is important to note that the annual number of deaths is small and therefore the confidence intervals are wide and the rate is prone to year on year fluctuation.

Note : '-' denotes where there less than 5 deaths

• **Mortality : Accidents, 65+ years, 2003-2005**

Local Authority	Average annual deaths	Rate/ 100,000	95% CI
England & Wales	6,342	59.9	(59 - 61)
Cambridge	14	68.7	(47 - 90)
East Cambridgeshire	9	57.4	(36 - 79)
Fenland	11	49.9	(32 - 67)
Huntingdonshire	17	66.6	(48 - 85)
South Cambridgeshire	15	58.4	(41 - 76)
Cambridgeshire County	67	60.6	(52 - 69)

Source: Compendium of Clinical and Health Indicators 2006 based on ONS mortality data

Definition : Deaths from accidents (ICD10 V01-X59) in people aged 65 years and over and directly age-standardised rate per 100,000 people aged 65 years and over

The rates for Cambridgeshire County and the Local Authorities do not differ statistically significantly from England and Wales. Average annual number of deaths from accidents in people aged 65 years and over are small, therefore the confidence intervals are wide and the rate is prone to year on year fluctuation.

• **Mortality : Land based transport accidents, all ages, 2003-2005**

Local Authority	Average annual deaths	SMR	95% CI
England	2,823	100	(98 - 102)
Cambridge	-	41	(20 - 75)
East Cambridgeshire	-	181	(115 - 272)
Fenland	11	233	(161 - 328)
Huntingdonshire	14	161	(116 - 217)
South Cambridgeshire	10	135	(91 - 193)
Cambridgeshire County	46	138	(116 - 164)

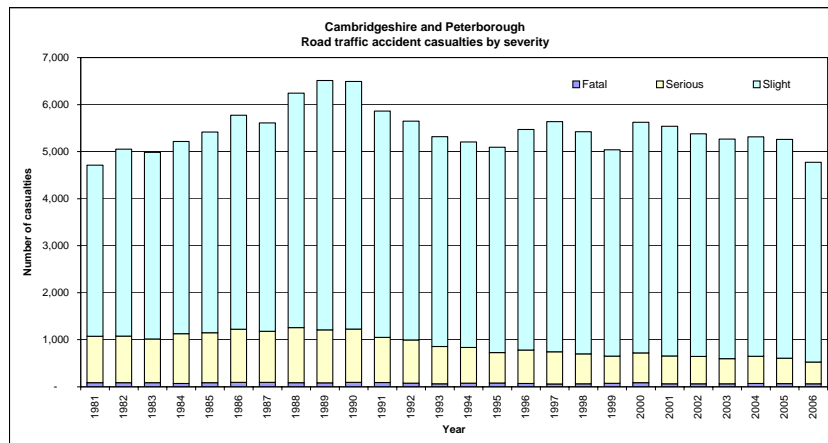
Source: Compendium of Clinical and Health Indicators 2006 based on ONS mortality data

Definition : Standardised Mortality Ratios (SMR) from Land Transport accidents (ICD10 V01-V89) for people of all ages.

Huntingdonshire, East Cambridgeshire, Fenland and Cambridgeshire County have statistically significantly high SMR's. Cambridge City has a statistically significantly low ratio.

Note : '-' denotes less than 10 deaths

• **Road Traffic Accident Trend, Casualty Severity, 1981 - 2006**



Source: Cambridgeshire County Council, Environment and Transport Information Team.

Definition : Number of road traffic accidents casualty severity, Cambridgeshire and Peterborough, 1981-2006

There have been year on year decreases in the total number of road traffic accidents since 2000. The decline in serious accidents is the most noticeable, with a 16% decrease between 2000 and 2003. Despite a slight increase in fatal and serious accidents in the year 2004 the rates numbers for 2005 and 2006 have decreased.

• **Mortality : Suicide and Injury Undetermined, all ages, 2003-2005**

Local Authority	Average annual deaths	Rate/ 100,000	95% CI
England & Wales	4,775	8.6	(8 - 9)
Cambridge	11	9.9	(6 - 13)
East Cambridgeshire	-	5.0	(2 - 8)
Fenland	-	7.2	(4 - 11)
Huntingdonshire	9	5.7	(4 - 8)
South Cambridgeshire	12	8.8	(6 - 12)
Cambridgeshire County	43	7.1	(6 - 8)

Source: Compendium of Clinical and Health Indicators 2006 based on ONS mortality data

Definition : Deaths from intentional self-harm and injury undetermined whether accidentally or purposely inflicted (ICD10 X60-X84, Y10-Y34, excluding Y33.9) in people of all ages and directly age-standardised rate per 100,000.

Cambridgeshire's rate is lower than the rate for England & Wales. East Cambridgeshire and Huntingdonshire have rates that are low compared to both England and Wales and Cambridgeshire County but do not differ significantly. Numbers of deaths per Local Authority are small and therefore prone to annual fluctuations.

Note : '-' denotes less than 8 deaths

• **Prevalence : Estimate of number of adults with a mental health problem, mid 2006**

District	Estimated number of people with a mental health problem
Cambridge City	13,876
East Cambridgeshire	8,095
Fenland	9,231
Huntingdonshire	17,577
South Cambridgeshire	14,871
Cambridgeshire	63,650

Source: Mental Health National Service Framework and Cambridgeshire County Council Research Group mid 2006 population estimates

Definition : Estimated number of adults (aged 16-64 years) with a mental health problem.

It is estimated that one in six people of working age will have suffered from some kind of mental health problem in the last week, most often anxiety or depression. This equates to approximately 63,500 adults in Cambridgeshire.

- **Prevalence : Estimates of number of children aged 5-15 years by mental disorder, mid 2006**

Local Authority	Emotional disorders			Conduct disorders			Hyperkinetic disorders			Less common disorders		
	Boys	Girls	Total	Boys	Girls	Total	Boys	Girls	Total	Boys	Girls	Total
Cambridge City	234	239	474	423	170	584	137	21	154	40	21	55
East Cambridgeshire	216	220	436	389	156	538	126	20	142	37	20	51
Fenland	258	276	534	466	196	658	151	25	174	44	25	62
Huntingdonshire	496	511	1,008	895	363	1,242	290	45	328	85	45	117
South Cambridgeshire	397	425	822	717	302	1,013	232	38	268	68	38	96
Cambridgeshire total	1,601	1,670	3,275	2,889	1,188	4,036	937	148	1,066	273	148	381

Source: : The mental health of children and adolescents in Great Britain, Office for National Statistics and Mid 2006 Population estimates, Cambridgeshire County Council Research Group

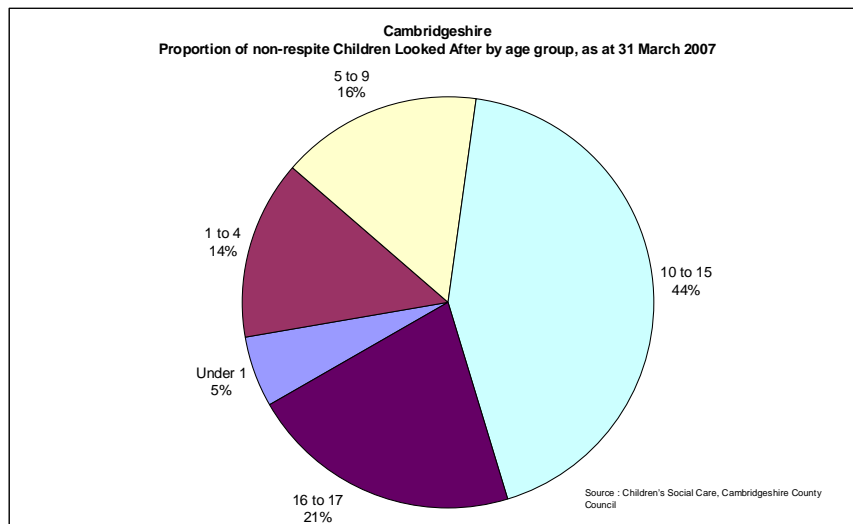
Definition: The estimated number of children aged 5-15 year by mental disorder

It is estimated that there are nearly 3,300 children with emotional disorders, over 4,000 children with conduct disorders, nearly 1,100 children with hyperkinetic disorders and almost 400 children with less common disorders in Cambridgeshire.

Note : total may not add due to rounding

Current met needs of the population of Cambridgeshire

- Children Looked After, March 2007**

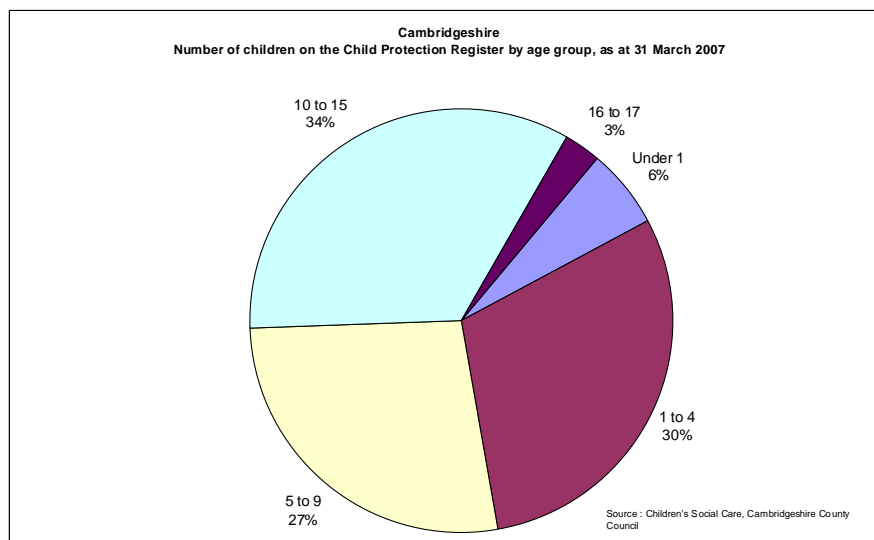


Source: Children's Social Care, Cambridgeshire County Council

Definition : Proportion of non-respite Children Looked After in Cambridgeshire as at 31 March 2007.

In April 2007 there were 365 non-respite Children Looked After in Cambridgeshire, with the majority being aged 10-15 years.

- Children on the Child Protection Register, March 2007**



Source: Children's Social Care, Cambridgeshire County Council

Definition : Proportion of children on the Child Protection Register as at 31 March 2007.

In April 2007 there were 290 children on the Child Protection Register in Cambridgeshire. By far the majority of these (36%) were aged under 5 years.

• **Carers : Total population, 2001**

Local Authority	No of People who provide care	% of all people	Of those that provide care		
			1 to 19 hours	20 to 49 hours	50 or more hours
Cambridge City	8,402	8.8%	76.4%	8.8%	14.8%
East Cambridgeshire	7,005	9.7%	74.8%	8.1%	17.1%
Fenland	8,118	9.9%	64.7%	10.9%	24.5%
Huntingdonshire	13,717	8.8%	72.8%	8.9%	18.3%
South Cambridgeshire	12,758	10.0%	79.7%	7.4%	12.8%
Cambridgeshire	50,000	9.4%	74.1%	8.8%	17.2%

Source: Census 2001 – Crown Copyright 2003 T01

Definition : Number and percentage of people who provide care

At the time of the Census 2001 over 50,000 people provided care, 9.4% of all people. The proportions were slightly higher in South Cambridgeshire, Fenland and East Cambridgeshire. The majority of people provided between 1 and 19 hours of care a week. However, proportions of care were higher for 20 to 49 hours in Fenland and 50 or more hours in Fenland and Huntingdonshire when compared to the county average.

• **Carers : Children aged 0-18 years, 2001**

Local Authority	No of children who provide care	% of all dependent children	Of those that provide care		
			1 to 19 hours	20 to 49 hours	50 or more hours
Cambridge City	207	1.2%	87.9%	6.3%	5.8%
East Cambridgeshire	166	1.0%	92.8%	3.6%	3.6%
Fenland	233	1.3%	82.8%	9.9%	7.3%
Huntingdonshire	359	0.9%	85.0%	5.8%	9.2%
South Cambridgeshire	296	1.0%	90.2%	6.1%	3.7%
Cambridgeshire total	1,261	1.1%	87.3%	6.4%	6.3%

Source: Census 2001 – Crown Copyright 2003 – Theme table T01

Definition : Number and percentage of carers who are dependent children aged 0-18 years

At the time of the census 2001 over 1,250 children provided care, which equates to nearly 1 child per 90 dependent children. The proportions were slightly higher in Fenland and Cambridge City. The majority of children provided between 1 and 19 hours of care a week. However, proportions of care were higher for 20 to 49 hours in Fenland and 50 or more hours in Huntingdonshire and Fenland when compared to the county average.

• **Carers : Older people, aged 65+ years, 2001**

Local Authority	No of people aged 65+ who provide care	% of all aged 65+	Of those that provide care		
			1 to 19 hours	20 to 49 hours	50 or more hours
Cambridge	1,770	12.3%	1,120	170	480
East Cambridgeshire	1,440	12.0%	820	140	480
Fenland	1,680	10.5%	810	190	680
Huntingdonshire	2,270	11.2%	1,290	230	750
South Cambridgeshire	2,340	12.2%	1,500	210	630
Cambridgeshire total	9,500	11.6%	5,530	940	3,020

Source: Census 2001 – Crown Copyright 2003 – Theme table People aged 50+

Definition : Number and percentage of carers who are aged 65 years and over

At the time of the census 2001 nearly 9,500 people aged 65 and over provided care. The majority of people provided between 1 and 19 hours of care a week. However, proportions of care were higher for 50 and more hours in Fenland, Huntingdonshire and East Cambridgeshire when compared to the county average.

- **Dental : mean number of decayed, filled or missing teeth in 5 year olds, academic year 2003/04**

PCT	Mean	95% CI
England	1.49	(1.48 - 1.51)
Cambridge City	1.50	(1.17 - 1.83)
East Cambridgeshire and Fenland	1.26	(0.92 - 1.60)
Huntingdonshire	0.84	(0.59 - 1.09)
South Cambridgeshire	0.83	(0.57 - 1.09)

Source: Compendium of Clinical and Health Indicators 2006 based on ONS mortality data

Definition : mean number of decayed, filled or missing teeth in 5 year olds, academic year 2003/04

Cambridge City was the only area to have the same average number of decayed, filled or missing teeth in 5 year olds as England. All the other areas had noticeably lower averages.

- **Immunisations : by 2nd birthday, 2005/06**

Former PCT	Diphtheria %	HIB %	MMR %	Meningitis C %	Pertussis %
Cambridge City	94	94	85	93	94
East Cambs and Fenland	96	96	89	96	96
Huntingdonshire	96	96	85	95	96
South Cambridgeshire	96	95	87	95	95
England	94	94	84	93	94

Source: 2005/06 Immunisation statistics, England 2005-2006, The Information Centre for Health and Social Care.

Definition : Proportion of children by their 2nd birthday year who have been immunised by type of immunisation, 2005/06

In general all of the former Cambridgeshire PCT's are above the England average for these immunisations, with the exception of Cambridge City, which is the same as the England average.

- **Immunisations : by 5th birthday, 2005/06**

Former PCT	Diphtheria, tetanus polio primary & booster %	MMR first and second dose %	MMR first dose %
Cambridge City	81	74	82
East Cambs and Fenland	91	84	88
Huntingdonshire	83	76	82
South Cambridgeshire	89	82	85
England	80	74	87

Source: 2005/06 Immunisation statistics, England 2005-2006, The Information Centre for Health and Social Care.

Definition : Proportion of children by their 5th birthday year who have been immunised by type of immunisation, 2005/06

All the former Cambridgeshire PCT's have immunisation coverage for diphtheria, tetanus and polio (primary and booster) and MMR (first and second dose) above the England average, though again Cambridge City appears to match the national rate. However, with the exception of East Cambridgeshire and Fenland, all former PCTs have lower MMR immunisation coverage (first dose) than seen nationally.

Health Inequalities across Cambridgeshire

The following section examines some of the health inequalities across Cambridgeshire. These are based on comparing the average rate for the wards in the most deprived areas to the wards in the least deprived areas of Cambridgeshire.

- Index of Multiple Deprivation : Fifth most deprived wards in Cambridgeshire**

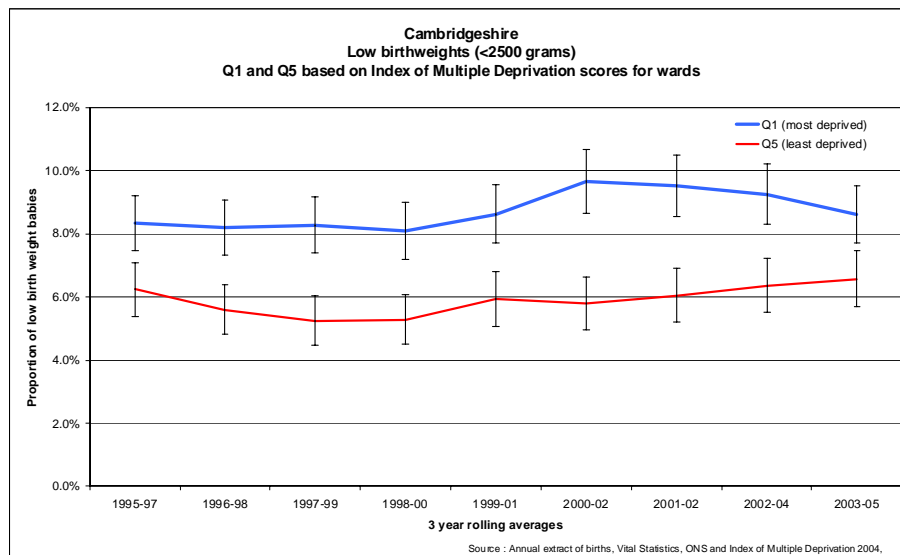
Local Authority	Ward name	IMD score
Fenland	Waterlees	36.83
Huntingdonshire	Huntingdon North	29.83
Fenland	Medworth	29.39
Fenland	Staithe	28.19
Fenland	Clarkson	27.96
Fenland	Parson Drove and Wisbech St Mary	25.10
Fenland	Kirkgate	25.10
Fenland	Elm and Christchurch	24.61
Cambridge	King's Hedges	24.58
Fenland	Kingsmoor	24.26
Fenland	Hill	23.41
Cambridge	Abbey	23.36
Fenland	Roman Bank	20.76
Cambridge	East Chesterton	19.80
Fenland	Peckover	19.35
Cambridge	Arbury	19.30
East Cambridgeshire	Littleport West	18.75
Fenland	March East	18.40
Fenland	March North	18.04
Fenland	Wenneye	17.62
Fenland	Lattersey	17.17
Fenland	St Marys	16.41
East Cambridgeshire	Littleport East	16.17
Fenland	Birch	15.91
Fenland	Benwick Coates and Eastrea	15.75

Source : Index of Multiple Deprivation, 2004, Office of the Deputy Prime Minister

Definition : The fifth most deprived wards in Cambridgeshire

These wards are the fifth most deprived wards in Cambridgeshire and are referred to as Q1 in the following charts.

- Low birthweight (under 2,500 grams), trend in quintiles based on deprivation**

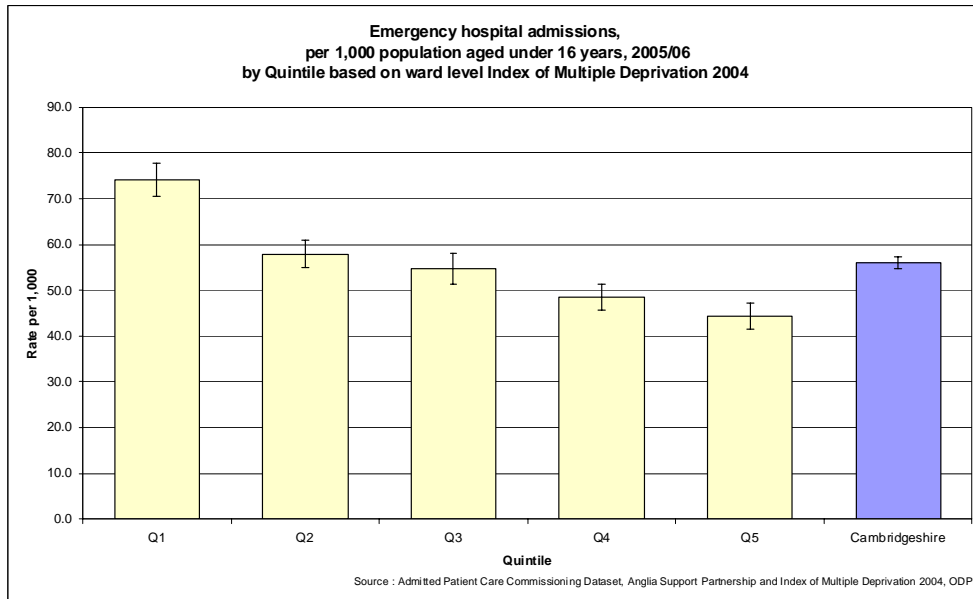


Source : Annual extract of births, Vital Statistics, Office for National Statistics and Index of Multiple Deprivation 2004, Office of Deputy Prime Minister

Definition : Average low birth rate (<2500 grams) of the 20% of wards that are the most deprived in Cambridgeshire (Q5) to the 20% of least deprived wards (Q1), based on the Index of Multiple Deprivation 2004.

Low birth weights are increasing in the least deprived group of wards in Cambridgeshire and decreasing in the most deprived group of wards i.e. the gap appears to be narrowing. However, the low birth weight for babies born in the top 20% most deprived wards in Cambridgeshire are statistically significantly higher than those in the least 20% wards. It is important to note that due to the relatively small numbers the rates can fluctuate annually.

- **Children (under 16 years) : Emergency hospital admission rate, 2005/06**

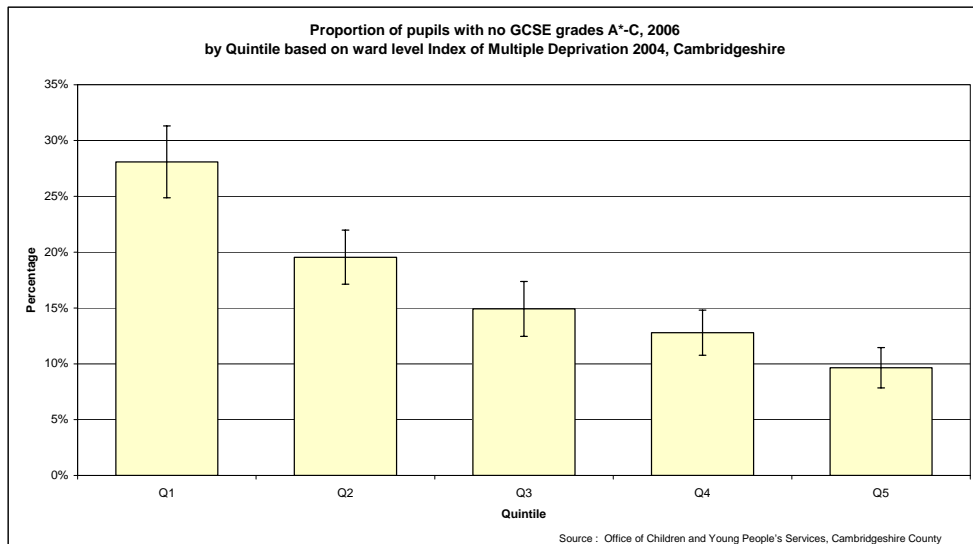


Source : Admitted Patient Care Commissioning Dataset, Anglia Support Partnership and Index of Multiple Deprivation 2004, Office of Deputy Prime Minister

Definition : Average emergency hospital admission rate for children aged under 16 years by quintiles based on the Index of Multiple Deprivation 2004. Q1 shows the rate for the fifth of the most deprived wards in Cambridgeshire and Q5 the rate for the fifth of least deprived wards.

The fifth of wards with the greatest levels of deprivation in Cambridgeshire (Q1) have a statistically significantly high emergency admission rate compared all the other groups of wards (based on deprivation) and the county average.

- **Education : Proportion of pupils with no GCSE grades A*-C, 2006**

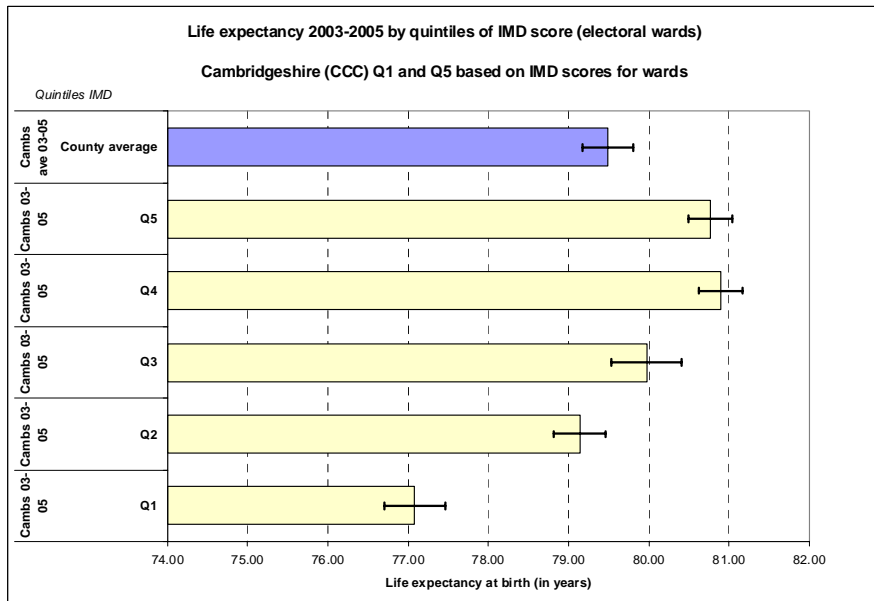


Source : Office of Children and Young People's Services, Cambridgeshire County Council and Index of Multiple Deprivation 2004, Office of Deputy Prime Minister

Definition : Average proportion of pupils with no GCSE grades A*-C, 2006 by quintiles based on the Index of Multiple Deprivation 2004. Q1 shows the rate for the fifth of the most deprived wards in Cambridgeshire and Q5 the rate for the fifth of least deprived wards.

This shows the gradient between the groups of wards based on deprivation levels for GCSE attainment. As can be seen, the wards with greater levels of deprivation (Q1) have lower levels of GCSE attainment, though deprivation is not the only factor affecting attainment.

• **Life Expectancy at birth : 2003-2005**

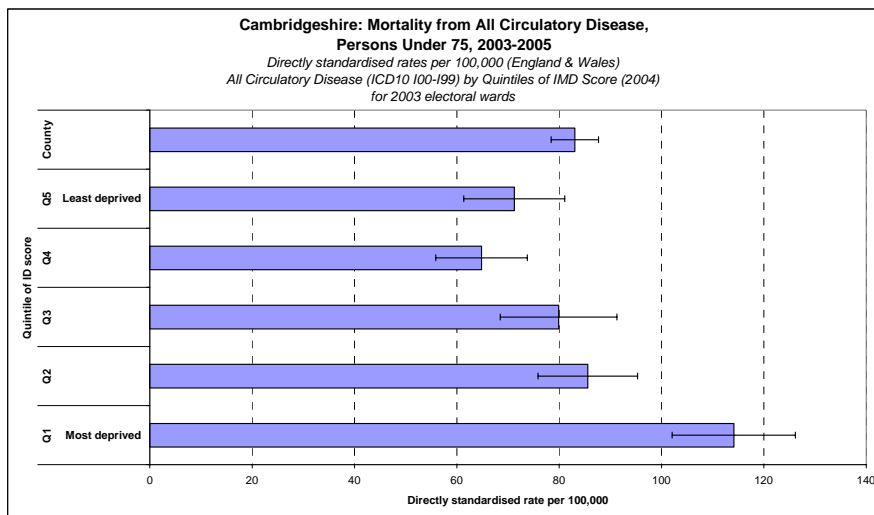


Source : Population data: Research Group of Cambridgeshire County Council population estimates. Deaths: Annual Extract of Deaths (ASP) 2003-2005. Index of Multiple Deprivation 2004, Office of Deputy Prime Minister. Life expectancy calculator: erpho 2005.

Definition : Average life expectancy at birth by ward quintiles based on the Index of Multiple Deprivation 2004. Q1 shows the rate for the fifth of the most deprived wards in Cambridgeshire and Q5 the rate for the fifth of least deprived wards.

Life expectancy in the fifth of wards in Cambridgeshire with the higher levels of deprivation is statistically significantly lower than all other groups of wards (based on quintiles of deprivation) and the county average. Those in the top 40% of wards with the least levels of deprivation (i.e. Q4 and Q5) have statistically significantly higher life expectancy than the county average.

• **Mortality : Circulatory disease, under 75 years**



Source : Annual extract of deaths, Vital Statistics, Office for National Statistics and Index of Multiple Deprivation 2004, Office of Deputy Prime Minister

Definition : Average mortality rate for circulatory disease in people aged under 75 years by quintiles based on the Index of Multiple Deprivation 2004. Q1 shows the rate for the fifth of the most deprived wards in Cambridgeshire and Q5 the rate for the fifth of least deprived wards.

The circulatory disease mortality rate in people aged under 75 years in the fifth of the most deprived wards in Cambridgeshire is statistically significantly high compared to all other groups of wards and the county average.

Glossary

The glossary provides brief definitions of the terms and statistical methods used throughout the data sets and detailed definitions for all information accompany each data presentation.

It should be noted throughout the report that for some health problems very small numbers are found for populations included. Small numbers give rise to statistical variability and unreliability. This will often be shown by the presence of a wide confidence interval.

- **Confidence Intervals (CI)**

These provide a measure of assurance that a particular value lies within a defined range. This allows us to take account of chance variation. In general 95% confidence limits are used and indicate the range in which we are 95% sure that the true value lies. Where a value, such as a death rate, and its confidence intervals lie outside the value we are comparing against we can state that there is a statistically significant difference in the rates. Some of the numbers in this report are quite small in terms of population and we may be looking at small numbers of health related events - in this case confidence intervals are likely to be wide and we should interpret the data carefully.

- **Directly Age-Standardised Rates (DASR)**

This allows comparison of incidence rates between populations of differing age and sex structure. The Compendium uses the European Standard Population to derive age-standardised rates, usually expressed as a rate per 100,000 population. Such rates are directly comparable relative to each other, but it is difficult to work backwards from the rate to the actual number (deaths, activity). In most cases the actual number is shown for information.

- **Incidence**

Is a measure of how often new cases of a disease or condition arise over a particular period. For example we might say y% of the population are newly diagnosed every year as diabetics.

- **Morbidity**

The extent of disease in a population.

- **Mortality**

The incidence of death in a population

- **ONS - Office for National Statistics**

The Office for National Statistics (now known as National Statistics) is the Government Agency responsible for the assimilation of data about life in the UK. Their primary aim is to provide a timely and comprehensive picture of the UK's economy and society to support the formulation and monitoring of Government policy. Further information, as well as lots of data, can be found at <http://www.statistics.gov.uk>.

- **Prevalence**

The extent to which a disease or condition is to be found in a population. For example we might say that x% of the population is diabetic at any point in time. Prevalence is a function of how many people contract a disease, and how long the condition lasts.

- **Standardised Mortality Ratio (SMR)**

SMRs allow comparison of populations with different age and sex structures. Calculation of SMRs involves applying national age-specific deaths rates to the local population in order to calculate a ratio of expected to observed deaths. This figure is then multiplied by 100. The

comparative national figure will conventionally be 100 - a local figure of 105 therefore indicates an increased incidence or risk of 5%, a local figure of 95 indicates a risk 5% lower. SMRs are indirectly age-standardised so the SMR itself can only be compared with the population it is standardised to, i.e. in our case England and Wales (SMR=100), and individual SMRs cannot be compared to one another.

- **Standardised Registration Ratio (SRR)**

SRRs allow comparison of populations with different age and sex structures. Expected registrations are calculated by applying the age-specific rates for England & Wales to the corresponding age-specific resident populations of each area. The SRR is thus the ratio of observed to expected registrations in an area, multiplied by 100. As with SMRs the comparative national figure will be 100 and SRRs are indirectly age-standardised.

- **Ward**

An electoral ward is a division of an administrative area used to elect councillors to serve on the councils of the administrative areas.